



# Reception News

**Welcome back!**

**Happy New Year! We hope you had a wonderful Christmas break making memories with your families. We would like to take this opportunity to thank you once again for the lovely Christmas cards and gifts. It was extremely generous of you all.**

**Our value for this term is resilience. We will be setting goals for ourselves and sharing stories that teach us strategies for when we find things tricky. We will continue to develop the children's independence this term, as well as their ability to compromise and work cooperatively. We will be incorporating lots of problem-solving opportunities to develop our reasoning and critical thinking skills.**

**Our Kingfisher team have lots of skills which we try our best to utilise. The Reception team will be slightly different this term. Mrs S is now supporting in Nursery, Mrs Sara is supporting in Year 2 and Mrs Shim will be joining us in the afternoons. She is a very experienced TA and trained in ELSA and Lego Therapy. Reception already know and love her from lunchtimes so they will be pleased!**

**Thank you,**

**The Early Years Team**

*Happy  
New Year  
2024*



**@KingfisherCE**



**Kingfisherceacademy**



**"Discovering and Learning Together, so all can Flourish".**

**'A tree planted by streams of water, which yields its fruit in season' (Psalm 1:3)**

**Wisdom – Hope – Service – Resilience**

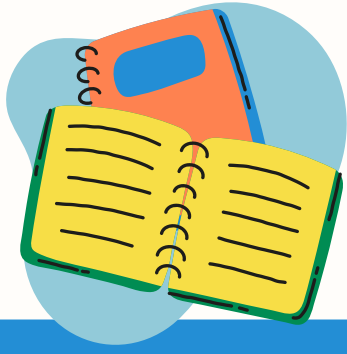


**Kingfisher  
CE ACADEMY**



**Wichelstowe Trinity  
Learning Campus**

**LIFE IN ALL ITS FULLNESS**



# Important updates

Please remember school begins at 8.45am. This is when children begin their learning. The Year 2 hall door will be shut and the playground gate locked at 8.55am to safeguard all our children.

Don't forget to book your school lunches for the term on the Schools Food United app. 

Please name ALL uniform to ensure it gets back to its owner. Thank you!

We continue to celebrate the countries we are from, our different cultures and languages that we can speak. Please let us know if your family have any celebrations this term you would like to come in and share with us.

## Term dates

- Tuesday 2nd January 2024 - INSET Day
- Wednesday 3rd January 2024 - First day of term 3
- Friday 9th February 2024 - Year 1 Class Assembly - 2.30pm
- Friday 9th February 2024 - End of term 3

Don't forget to follow us on...



@KingfisherCE



Kingfisherceacademy



"Discovering and Learning Together, so all can Flourish".

'A tree planted by streams of water, which yields its fruit in season' (Psalm 1:3)

Wisdom – Hope – Service – Resilience



Kingfisher  
CE ACADEMY



Wichelstowe Trinity  
Learning Campus

LIFE IN ALL ITS FULLNESS

# Term overview



We will be learning about changes in weather and seasons. We will compare countries and habitats around the world. We will also celebrate Chinese New Year. We will learn about Chinese traditions and compare them to our own celebrations.



## Personal, Social and Emotional Development

We will be learning to:

- Set goals for ourselves to achieve
- Build and develop storylines together
- Persevere through challenges
- Develop our resilience
- Apply what we have learned about problem solving
- use technology safely and understand about sensible amounts of screen time (Safer Internet Day)

## Physical Development

We will be learning to:

- Put on and fasten our own coats, socks, shoes and gloves
- Build our shoulder and arm muscles through Squiggle
- Build our finger strength and mobility through fine motor activities
- Hold a pencil correctly
- Form all letters correctly
- Throw, catch and aim with beanbags and balls

## Communication and Language

We will be learning to:

- Share ideas with others
- Listen to others in a variety of situations
- Join in with familiar stories, rhymes and songs
- Respond to more complex instructions
- Understand and use topic related vocabulary
- Ask questions and develop explanations

## Maths

We will be learning to:

- Subitise above 5
- Recognise and write 6, 7 and 8
- Count amounts carefully and accurately
- Recognise the number pairs and relationships within each number to 8
- Add within 8
- Measure, order and compare items by their capacity and mass
- Use the correct vocabulary to discuss time
- Recognise and describe shapes and their properties

Who has made a difference to our world?

## Reception Term 3

### Literacy

We will be learning to:

- Listen to stories and information from non-fiction books
- Recall details about settings, characters and events
- Recognise digraphs in words and blend with them
- Write simple captions
- Read and spell tricky words

## Understanding the World

We will be learning to:

- Describe seasonal changes from Autumn to Winter
- Compare countries around the world and how people's lives are different to ours
- Compare habitats around the world
- Recognise and explain changes in state - freezing and thawing
- Understand how cultures have different celebrations and special times

## Expressive Arts and Design

We will be learning to:

- Use different media and techniques to experiment with colour and texture
- Dance in response to music
- Sing songs and rhymes identifying the pulse and rhythm, changing the pitch and adding instruments
- Retell familiar stories and make new ones using stories we know



**I AM STRONG  
I AM CAPABLE  
I AM RESILIENT**

This term our enquiry question is:  
**Who has made a difference to our world?**

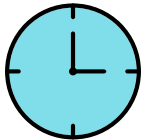
Our value for the term is **RESILIENCE**.



# Reading



## Rave about Reading!



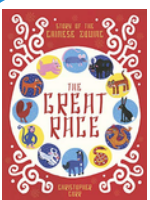
Every class at 3pm has an opportunity to 'Rave about Reading'! This is when children get to share stories, discuss their favourite books, make recommendations for friends and vote for the book they want to read next!

## Book change days

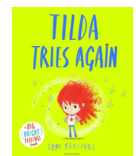
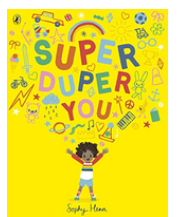
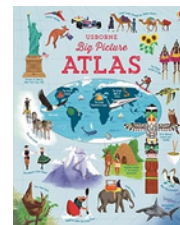
Please ensure **both books** are in your child's book bags for **Monday** to be collected in. Your children will bring a new sharing book on **Monday** and a new phonics book on **Thursday**.

Please ensure they are returned. If not, we can't give new ones to everyone as we have limited numbers of books.

## Books for the term



- Super Duper You - Sophy Henn
- Tilda Tries Again - Tom Percival
- The Great Race - Christopher Corr
- Big Picture Atlas - Emily Bone
- The Dot - Peter Reynolds



## How you can help at home

Share books that your children bring home from school. Read any books you have at home. Read recipes, magazines, print in the environment. Let your children see you reading!

# Phonics



We will continue learning a new phoneme each day. These will be new digraphs which are two letters that make one sound.

Our main focus is for every child to be blending and reading words. We will also learn new tricky words which can't be sounded out.

## Phase 2 Sound Mat

|   |   |    |    |    |    |    |    |
|---|---|----|----|----|----|----|----|
| s | a | t  | p  | i  | n  | m  | d  |
| g | o | c  | k  | ck | e  | u  | r  |
| h | b | f  | l  | j  | v  | w  | x  |
| y | z | qu | th | sh | ch | ng | nk |

## Tricky words

is | the | put | pull | full | as  
and | has | his | her | go | no | to  
into | she | push | he | of | we | me | be

## How you can help at home

Each week we will share a recap of the learning we have covered in phonics. You can work on these at home with your child. Try reading and spelling the words and sentences with each week's phonemes and tricky words.

# What you will need...

## P.E.

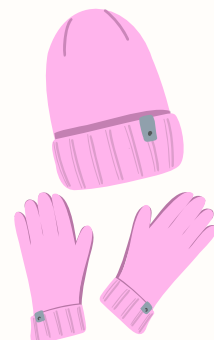
PE will be on a **Monday**. Please send your child to school with their PE kit on. Please remember our PE uniform is a Kingfisher OR white polo shirt, navy/black shorts or trousers and plain trainers or daps. They will be in this all day, so please ensure it is weather appropriate.



## Outdoor learning

We will be doing regular outdoor learning and Welly Walks. Please can all children have a pair of named wellies in school for these.

We also go outside in all weathers. Children will need waterproof coats and appropriate weather gear for the season.



# PLEASE LABEL EVERYTHING!

# Christian Authenticity

## In Collective Worship...

**Our collective worship assemblies will now focus on building resilience and Bible stories reflecting this. We will be learning more about Jesus and his disciples.**



## Child of Hope



**We continue to think about and make links with our Kingfisher family in Uganda at the Child of Hope school. We loved watching their Nativity and enjoyed swapping Christmas cards with them. We look forward to seeing what this term brings for our Kingfisher family and theirs.**



## Kingfisher Community Cupboard

**Thank you again for all your kind donations. These were shared with those in need over Christmas. We hope to continue to re-stock this term and provide support to our families and the local community. Please feel free to drop off or collect items .**



## Safeguarding

Please contact 'Contact Swindon' if you are concerned about a child.

**E-mail:**

**[contactswindon@swindon.gov.uk](mailto:contactswindon@swindon.gov.uk)**

**Telephone: 01793 464646**

**8.30am to 4.40pm Monday to Thursday**

**8.30am to 4.00pm Friday**

**The Emergency Duty Service (EDS) is available outside office hours on**

**01793 436699**

**If you think that a child is in immediate danger, please ring 999 and speak to the police.**

