



# Reception News



**Welcome back!**

**I hope you had a lovely week making memories with your little people!**

**Our value for this term is wisdom. We will be making links to knowledge we already have, seeing how much progress we have made and working on new targets for the term.**

**We are looking forward to the weather warming up, the days getting lighter and Spring being in the air.**

**We have new clubs starting this term and some events to welcome you into school for.**

**We'd also like to thank you for your support towards the school with our visitors last week.**

**Thank you,**

**The Early Years Team**



**Don't forget to follow us on...**



**@KingfisherCE**



**Kingfisherceacademy**



**"Discovering and Learning Together, so all can Flourish".**

**'A tree planted by streams of water, which yields its fruit in season' (Psalm 1:3)**



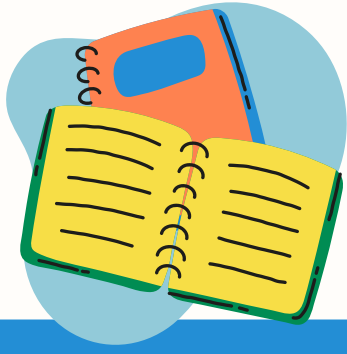
**Kingfisher  
CE ACADEMY**

**Wisdom – Hope – Service – Resilience**



**Wichelstowe Trinity  
Learning Campus**

**LIFE IN ALL ITS FULLNESS**



# Important updates

Please remember school begins at 8.45am. This is when children begin their learning. The Year 2 hall door will be shut and the playground gate locked at 8.55am to safeguard all our children.

Don't forget to book your school lunches for the term on the Schools Food United app.



Please name ALL uniform to ensure it gets back to its owner. Thank you!

We continue to celebrate the countries we are from, our different cultures and languages that we can speak. Please let us know if your family have any celebrations this term you would like to come in and share with us.

## Term dates

- Monday 19th February 2024 - First day of term 4
- Thursday 7th March 2024 - World Book Day
- Friday 8th March 2024 - Mother's Day Afternoon Tea - 2.30pm
- Monday 11th March 2024 - Science Week
- Friday 22nd March 2024 - Make a Noise festival
- Tuesday 26th March 2024 - Parent's Evening - 3.30-6pm
- Wednesday 27th March 2024 - Parent's Evening - 4-7pm
- Thursday 28th March 2024 - Easter Bonnet Parade and Service
- Thursday 28th March 2024 - End of term 4

Don't forget to follow us on...



@KingfisherCE



Kingfisherceacademy



"Discovering and Learning Together, so all can Flourish".

'A tree planted by streams of water, which yields its fruit in season' (Psalm 1:3)



Kingfisher  
CE ACADEMY

Wisdom – Hope – Service – Resilience



Wichelstowe Trinity  
Learning Campus

LIFE IN ALL ITS FULLNESS

# Term overview



We will be learning more about other countries and cultures as we discover celebrations such as Holi, Ramadan and Easter. We will also be learning about our planet, the impact we have on it and how we can use our wisdom to make positive changes.



## Personal, Social and Emotional Development

We are learning to:

- Build and develop storylines together
- Problem solve
- Keep ourselves healthy and safe through sleeping, healthy eating, good hygiene, sensible amounts of screen time, stranger danger and road safety

## Physical Development

We are learning to:

- Negotiate space and obstacles safely
- Show spacial awareness
- Develop agility and control speed of movements
- Count out 8 within a sequence
- Demonstrate strength, co-ordination and balance
- Move and adapt our bodies to a short sequence

## Communication and Language

We are learning to:

- Join in with familiar stories, rhymes and songs
- Respond to more complex instructions
- Understand and use topic related vocabulary
- Ask questions and develop explanations

## Maths

We are learning to:

- Subitise over 5
- Recognise and write 9, 10
- Count amounts carefully and accurately
- Recognise and describe 2d and 3d shapes, and their properties
- Use the correct vocabulary to describe length, height and capacity
- Recognise and spot errors in repeating patterns
- Identify number pairs and write them as an addition equation

What is the cost of our impact on the planet?

## Reception Term 4

### Literacy

We are learning to:

- Listen to and recall details from stories and non-fiction books
- Discuss characters, settings and events in detail
- Act out familiar stories and create our own
- Read and spell new phonemes and tricky words
- Recognise digraphs in words and blend with them
- Read and write sentences applying phonic knowledge

## Understanding the World

We are learning to:

- Explain how and why Lent, Shrove Tuesday, Ramadan, Holi and Easter are celebrated
- Recognise what pollution is and how we can help our planet
- Explore and sequence lifecycles of humans, bees and sunflowers
- Explore weather traits and compare them to other places in the world

## Expressive Arts and Design

We are learning to:

- Look closely at objects and draw what we see
- Record still life using different media - pencil, pastel, paint
- Apply our previous learning of colour mixing and shading
- Sing songs from memory and take part in a music event with other schools



This term our enquiry question is:  
What is the cost of our impact on the planet?



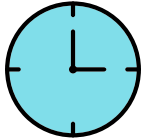
Our value for the term is WISDOM.



# Reading



## Rave about Reading!



Every class at 3pm has an opportunity to 'Rave about Reading'! This is when children get to share stories, discuss their favourite books, make recommendations for friends and vote for the book they want to read next!

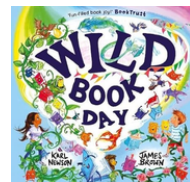
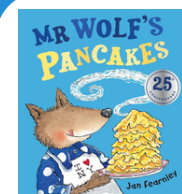
## Book change days

Please ensure **both books** are in your child's book bags for **Monday** to be collected in. Your children will bring a new sharing book on **Monday** and a new phonics book on **Thursday**.

Please ensure they are returned. If not, we can't give new ones to everyone as we have limited numbers of books.

## Books for the term

- Mr Wolf's Pancakes – Jan Fearnley
- Stella and the Seagull - Georgina Stevens
- Wild Book Day - Karl Newson
- Meet the Weather – Caryl Hart
- That's my Flower – Alice Hemming
- Clean Up! Dapa Adeola



## How you can help at home

Share books that your children bring home from school. Read any books you have at home. Read recipes, magazines, print in the environment. Let your children see you reading!

# Phonics



We are recapping the digraphs (two letters, one sound) and trigraphs (three letters, one sound) we have already learned in phase 3. We will develop our accuracy with recognising them in words. We will also work on reading more sentences fluently with less sounding out.

We can't sound tricky words out and need to read them by sight. We are consolidating spelling them correctly.

## Phase 3 Sound Mat

 ai	 ee	 igh	 oa	 oo	 oo	 ar	 or
 ur	 ow	 oi	 ear	 air	 er		

### Tricky words

is I the put pull full as  
and has his her go no to  
into she push he of we me be

### Tricky words

was you they my by all  
are sure pure

## How you can help at home

Each week we will share a recap of the learning we have covered in phonics. You can work on these at home with your child. Try reading and spelling the words and sentences with each week's phonemes and tricky words.

# What you will need...

## P.E.

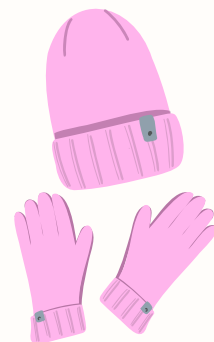
PE will be on a **Monday**. Please send your child to school with their PE kit on. Please remember our PE uniform is a Kingfisher OR white polo shirt, navy/black shorts or trousers and plain trainers or daps. They will be in this all day, so please ensure it is weather appropriate.



## Outdoor learning

We will be doing regular outdoor learning and Welly Walks. Please can all children have a pair of named wellies in school for these.

We also go outside in all weathers. Children will need waterproof coats and appropriate weather gear for the season.



# PLEASE LABEL EVERYTHING!

# Christian Authenticity

## In Collective Worship...

**Our collective worship assemblies will now focus on wisdom and Bible stories reflecting this. We will be learning more about Jesus and how he helped others.**



## Child of Hope



**We continue to think about and make links with our Kingfisher family in Uganda at the Child of Hope school. . We look forward to seeing what this term brings for our Kingfisher family and theirs.**



## Kingfisher Community Cupboard

**Thank you again for all your kind donations. We hope to continue to re-stock this term and provide support to our families and the local community. Please feel free to drop off or collect items .**



## Safeguarding

**Please contact 'Contact Swindon' if you are concerned about a child.**

**E-mail:**

**contactswindon@swindon.gov.uk**

**Telephone: 01793 464646**

**8.30am to 4.40pm Monday to Thursday**

**8.30am to 4.00pm Friday**

**The Emergency Duty Service (EDS) is available outside office hours on**

**01793 436699**

**If you think that a child is in immediate danger, please ring 999 and speak to the police.**

