

Year 1 News



Welcome back!

I hope you had a lovely week making memories with your little people!

Our value for this term is wisdom. We will be making links to knowledge we already have, seeing how much progress we have made and working on new targets for the term.

We are looking forward to the weather warming up, the days getting lighter and Spring being in the air.

We have new clubs starting this term and some events to welcome you into school for.

We'd also like to thank you for your support towards the school with our visitors last week.

Thank you,

The Year 1 Team



Don't forget to follow us on...



@KingfisherCE



Kingfisherceacademy



"Discovering and Learning Together, so all can Flourish".

'A tree planted by streams of water, which yields its fruit in season' (Psalm 1:3)



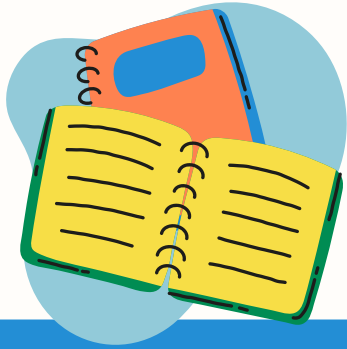
**Kingfisher
CE ACADEMY**

Wisdom – Hope – Service – Resilience



**Wichelstowe Trinity
Learning Campus**

LIFE IN ALL ITS FULLNESS



Important updates

Please remember school begins at 8.45am. This is when children begin their learning. The Year 2 hall door will be shut and the playground gate locked at 8.55am to safeguard all our children.

Don't forget to book your school lunches for the term on the Schools Food United app.



Please name ALL uniform to ensure it gets back to its owner. Thank you!

We continue to celebrate the countries we are from, our different cultures and languages that we can speak. Please let us know if your family have any celebrations this term you would like to come in and share with us.

Term dates

- Monday 19th February 2024 - First day of term 4
- Thursday 7th March 2024 - World Book Day
- Friday 8th March 2024 - Mother's Day Afternoon Tea - 2.30pm
- Monday 11th March 2024 - Science Week
- Friday 22nd March 2024 - Year 1 Curriculum Assembly
- Tuesday 26th March 2024 - Parent's Evening - 3.30-6pm
- Wednesday 27th March 2024 - Parent's Evening - 4-7pm
- Thursday 28th March 2024 - Easter Bonnet Parade and Service
- Thursday 28th March 2024 - End of term 4

Don't forget to follow us on...



@KingfisherCE



Kingfisherceacademy



"Discovering and Learning Together, so all can Flourish".

'A tree planted by streams of water, which yields its fruit in season' (Psalm 1:3)

Wisdom – Hope – Service – Resilience



Kingfisher
CE ACADEMY

Wichelstowe Trinity
Learning Campus
LIFE IN ALL ITS FULLNESS

Term overview



We will be learning more about other countries and cultures as we discover celebrations such as Holi, Ramadan and Easter. We will also be learning about our planet, the impact we have on it and how we can use our wisdom to make positive changes.



Humanities

In geography, we will be learning to:

- Identify types of weather.
- Discuss seasonal weather.
- Explore weather, animals and life in the Arctic and Antarctic.
- Identify the location and habitats of the North and South Pole.
- Explore weather, animals and life in hot regions.
- Compare weather in hot and cold regions to the UK.

Art

In Art, we will be learning to:

- Exploring the work of Pablo Picasso and Brianna McCarthy.
- We will use shapes, lines and textures to create art.
- We will continue to look at abstract and realism.
- We will use different mediums such as pastels, collage and paint to create portraits.

RE

In RE, we will be learning to:

- Explore who Jews are and what they believe.
- Understand what is important to their traditions and celebrations.

PSHE

In PSHE, we will be learning to:

- Keep ourselves healthy and clean.
- Explore and explain why hygiene routines are important.

Computing

In computing, we will be learning to:

- Be safe online
- Explore technology around us.
- Explore parts of a computer and iPad.

What is the cost of our impact of the world?

PE

Gymnastics & Dance:
We will be learning to:

- Practice balances, positions, movements and rolls.
- Safely use a variety of equipment.
- Sequence movements to music individually and in a group.

Maths

We will be learning to:

- Add and subtract a 2 digit number from a 1 digit number.
- Make arrays
- Find and compare equal groups.
- Find near doubles.
- Double numbers to 20.
- Halve numbers to 20.
- Find half or a quarter of an object or amount.
- Tell the time to the nearest hour or half hour

Literacy

We will be learning to:

- Use basic punctuation when writing sentences.
- Verbally construct and rehearse sentences.
- Identify and include different word classes in their sentences (e.g. nouns, adjectives, adverbs, and verbs).
- Plan and write a setting description.
- Plan and write a character description.
- Plan and write a diary entry.
- Plan and write a sequel chapter to a book.
- Edit a written piece.

Science

We will be learning to:

- Identify and naming parts of a plant and a tree.
- Observe, measure and record.
- Explore what plants need to grow.
- Investigate plants.
- Observe plants over time.

Year 1 Term 4



This term our enquiry question is:
What is the cost of our impact on the planet?



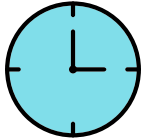
Our value for the term is WISDOM.



Reading



Rave about Reading!



Every class at 3pm has an opportunity to 'Rave about Reading'! This is when children get to share stories, discuss their favourite books, make recommendations for friends and vote for the book they want to read next!

Book change days

Please ensure **both books** are in your child's book bags for **Monday** to be collected in. Your children will bring a new sharing book on **Monday** and a new phonics book on **Thursday**.

Please ensure they are returned. If not, we can't give new ones to everyone as we have limited numbers of books.

Books for the term

- All the ways to be smart by Davina Bell
- One World- 24 hours on planet earth by Nicola Davies
- Omar the Bees and Me by Helen Mortimer
- The Water Princess by Susan Verde
- The Bear Report by Tyra Heder
- Desert Girl and Monsoon Boy by Tara Dairman



How you can help at home

Share books that your children bring home from school. Read any books you have at home. Read recipes, magazines, print in the environment. Let your children see you reading!

Phonics



We are continuing to grow the code. We are introducing more digraphs (two letters, one sounds) and trigraphs (three letters, one sounds) that have have the same phoneme (sound). We will develop our accuracy with recognising them in words. We will also work on reading more sentences fluently with less sounding out and more expression.

We can't sound tricky words out and need to read them by sight. We are consolidating spelling them correctly.

Grow the code grapheme mat Phase 2, 3 and 5

| | | | | | | | |
|------|-----|-----|-----|-----|-----|-----|-----|
| ai | ee | igh | oa | oo | yoo | oo | ar |
| ay | ea | ie | o | ue | ue | u* | a* |
| a | e | i | o-e | u-e | u | oul | al* |
| a-e | e-e | i-e | ou | ew | u-e | | |
| eigh | ie | y | oe | ou | ew | | |
| aigh | y | | ow | ui | | | |
| ey | ey | | | | | | |
| ea | | | | | | | |
| or | ur | ow | oi | ear | air | zh | |
| aw | er | ou | oy | ere | are | su | |
| au | ir | | | eer | ere | si | |
| aur | or | | | | ear | | |
| oor | | | | | | | |
| al | | | | | | | |
| a | | | | | | | |
| oar | | | | | | | |
| ore | | | | | | | |

Little Wandle tricky words Year 1

Taught in Phase 5

again
any
ask
beautiful
because
busy
call
could
different
eye
friend
hour
house
improve
laugh
many
mouse
move
Mr
Mrs
Ms

oh
once
our
parents
people
pretty
school
shoe
should
their
thought
through
two
want
water
where
who
whole
work
would
your

How you can help at home

Each week we will share a recap of the learning we have covered in phonics. You can work on these at home with your child. Try reading and spelling the words and sentences with each week's phonemes and tricky words.

*depending on regional accent

What you will need...

P.E.

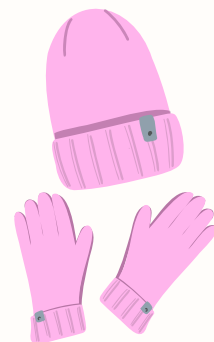
PE will be on a **Tuesday and Thursday**. Please send your child to school with their PE kit on. Please remember our PE uniform is a Kingfisher OR white polo shirt, navy/black shorts or trousers and plain trainers or daps. They will be in this all day, so please ensure it is weather appropriate.



Outdoor learning

We will be doing regular outdoor learning and Welly Walks. Please can all children have a pair of named wellies in school for these.

We also go outside in all weathers. Children will need waterproof coats and appropriate weather gear for the season.



PLEASE LABEL EVERYTHING!

Christian Authenticity

In Collective Worship...

Our collective worship assemblies will now focus on wisdom and Bible stories reflecting this. We will be learning more about Jesus and how he helped others.



Child of Hope



We continue to think about and make links with our Kingfisher family in Uganda at the Child of Hope school. . We look forward to seeing what this term brings for our Kingfisher family and theirs.



Kingfisher Community Cupboard

Thank you again for all your kind donations. We hope to continue to re-stock this term and provide support to our families and the local community. Please feel free to drop off or collect items .



Safeguarding

Please contact 'Contact Swindon' if you are concerned about a child.

E-mail:

contactswindon@swindon.gov.uk

Telephone: 01793 464646

8.30am to 4.40pm Monday to Thursday

8.30am to 4.00pm Friday

The Emergency Duty Service (EDS) is available outside office hours on

01793 436699

If you think that a child is in immediate danger, please ring 999 and speak to the police.

