

Learning Flow

Year 3 – History – Term 3–4 – Stone Age, Bronze Age & Iron Age



What do we already know?

Topic Page - Prior knowledge. What do we already know? What questions do we have?



When were the Stone, Iron and Bronze Ages?

- Place on a timeline.
- Map out to show how they account for most of human history.
- How long did the Stone Age last?
- 3 parts of Stone Age

Pupils can use timelines to place up to five significant events and artefacts from the time studied in order and to understand that timelines can be divided into BC and AD.



What was daily life like in the Mesolithic period?

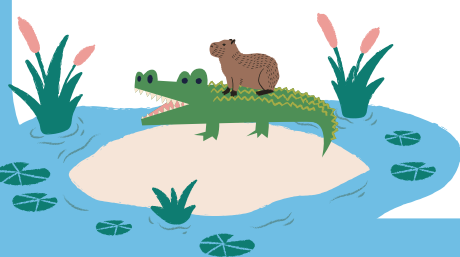
- hunter gatherers
- nomadic existence, moving with the seasons.
- Tools began being fashioned (hand axe)
- flint tools

Pupils should answer who, what, when, where and why questions beginning to use sources of evidence to support their answers.



What was daily life like in the Mesolithic period?

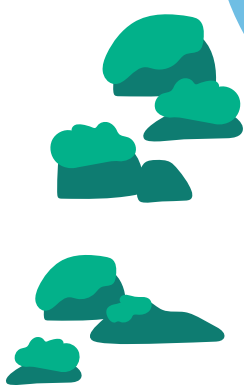
- Settlements
- Animals/livestock
- Materials
- Creations



What was daily life like in the Neolithic period?

- agriculture began,
- crops were grown
- permanent structures of community were built (Stonehenge)

Pupils are able to use two or more sources to describe the differences and similarities between houses and settlements; culture and the way of life; people's beliefs and attitudes; main events and differences between rich and poor.



What do we know now? End of Term 3

- Publish a non-chronological report.
- Quiz

Pupils communicate knowledge about people, objects or events from the past, using a variety of approaches such as discussions, different genres of writing, drawing and diagrams.



Continued into Term 4.

