



Year Two News

Welcome message

We hope you and your family have enjoyed the the Christmas break however you celebrate. We would like to take this opportunity to thank you once again for the lovely Christmas cards and gifts. It was extremely generous of you all. Thank you again for all your support with our Nativity it was fabulous and hopefully lots of memories made!

As we move into a busy term 3 there are lots of events happening. This newsletter will give you some key information about the term ahead.

We will be learning about resilience and this value weaves into much of our learning this term. Our learning will continue to teach knowledge and skills and give the children opportunities to apply them in different contexts to maximise their learning opportunities and stickability.

If you have any questions regarding the information in this newsletter, or other more general queries, please don't hesitate to talk to us.

Thank you,

The Year Two Team



Don't forget to follow us on...



@KingfisherCE



Kingfisherceacademy

"Discovering and Learning Together, so all can Flourish".

'A tree planted by streams of water, which yields its fruit in season' (Psalm 1:3)

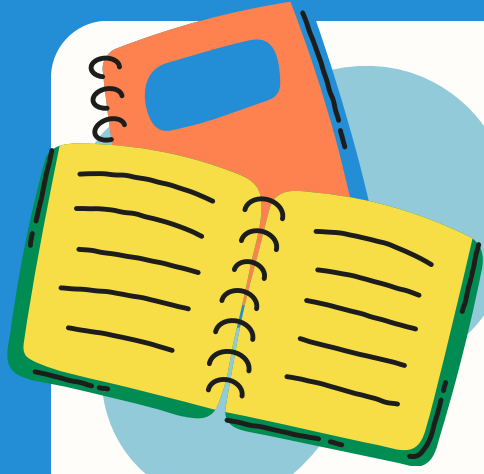
Wisdom – Hope – Service – Resilience



Kingfisher
CE ACADEMY

Wichelstowe Trinity
Learning Campus

LIFE IN ALL ITS FULLNESS



Important updates

Please remember school begins at **8.45am**. This is when children begin their learning. Please be on time. The hall doors will then be shut and the playground gate locked at **8.55am**. This is to safeguard all our children.

Don't forget to book your school lunches for the term on the Schools Food United app.



Please name ALL uniform to ensure it gets back to you.

PE ay will be FRIDAY for term 3

We are a mobile free zone. We would appreciate all phones to be switched off or put away on the playground. Please greet your child with a smile and not your phone!

Term dates

- Monday 6th January 2025 - First day of term 2
- 3rd - 7th February Math's Week
- Friday 7th February - Year 1 Drumming assembly 10am
- Tuesday 11th February - Safer Internet Day
- Thursday 13th February - Open Classroom afternoon 3.30
- Friday 14th February - End of term 3

Don't forget to follow us on...



@KingfisherCE



Kingfisherceacademy

"Discovering and Learning Together, so all can Flourish".

'A tree planted by streams of water, which yields its fruit in season' (Psalm 1:3)



Kingfisher
CE ACADEMY

Wisdom – Hope – Service – Resilience



Wichelstowe Trinity
Learning Campus

LIFE IN ALL ITS FULLNESS

Term overview



Each term we will send you an overview of our learning in each area of the curriculum for the term. You can also find it on the website. It looks like this:

Year 2- Term 3

English

The Bear and the Piano
Own version narratives about bravery
Letters of advice, short news reports, writing in role, retellings, information posters
The Minpins
Own version adventure narratives
Danger posters, setting descriptions, character descriptions, information reports, postcards

History

- Explain who Mary Anning was and what she did
- Identify the importance of this discovery
- Understand why was this a huge achievement as a woman
- Describe what life was like for women
- Explain how we know about Mary's actions
- Give your opinions on how and why should we remember Mary Anning?

Maths

Number and place value

- Flexible partitioning
- Comparing measures

Calculations
Multiplication and division
Measures - mass and length/height

Science

Plants

- Describe what plants need to survive.
- Observe and describe how seeds and bulbs grow into mature plants.
- Investigate & describe how plants need water, light and a suitable temperature to grow and stay healthy.
- Describe what plants need to survive and link it to where they are found (environments/compare).
- Explain how plants grow and reproduce in different ways (compare).

PE

Dance

- COMPOSE
- Create a short motif inspired by a stimulus, using simple body movement and patterns.
- Change the speed and level of their actions. Use simple choreographic devices such as unison, canon and mirroring.

PERFORM

- Move with confidence showing some control and co-ordination Move with confidence when walking, hopping, jumping, landing Move with rhythm in the above action Demonstrate good balance
- -Co-ordinate arm and leg actions (e.g. march and clap)
- -Interact with a partner (e.g. holding hands, swapping places, meeting and parting)

EVALUATE

- -Respond to own work and that of others when exploring ideas, feelings and preferences

RE

Who is a Muslim and what do they believe?

- Explain how Muslims think of God
- Identify that objects and items that are important to Muslims.
- Describe how and what Muslims celebrate?

DT

- Identify healthy options are there for sweet snacks?
- Design and make rock cakes/ muffins following a recipe and your design
- Evaluate - How does my design fit the criteria?

Computing:

Programming - Robot Algorithms

- Use instructions in sequences and use of logical reasoning to predict outcomes.
- Use given commands in different orders to investigate how the order affects the outcome.
- Design algorithms and then test those algorithms as programs and debug them.

PSHE - Health and wellbeing

Understand and discuss:

- Feelings;
- mood;
- times of change;
- loss and
- bereavement;
- growing up

Our value for the term is Resilience

BE
RESILIENT!



Our team



There are lots of people who are part of our extended Kingfisher family. You and your children may see them around the campus.

Senior Leadership Team



Ms Bishop
(our Headteacher
and Designated
Safeguarding Lead)



Miss Telling
(Deputy Head, SENCO
and Deputy Designated
Safeguarding Lead)



Mrs Bishop
(Campus Co-Ordinator)

Our Nursery Team



Mrs Lane
(Nursery Manager
- Pre-School)



Miss Watts
(Deputy Nursery Manager -
Two year olds)



Mrs Engley



Mrs Khan



Mrs Brown

(EYFS Teaching Assistants)

Our EYFS Team



Miss Telling
Reception Teacher



Mrs Dixon
Reception Teacher

Our key Stage 1 Team



Miss Bowron
(Year 1 teacher)



Mrs Connell
(Year 2 teacher)

Our key Stage 2 Team



Miss Baddeley
(Year 3 teacher, Curriculum Leader,
Deputy Designated Safeguarding Lead)

Our team



Our Teaching Assistants

Our team have so many different skills and experiences. They work across the school to utilise these:



Mrs B



Jill



Mrs Sara



Mary



Mrs Shim



Miss Coe
(our Higher Level Teaching Assistant who will work across the school)

Admin Team

Our Kingfisher Admin will be front of house to answer your questions and provide you with support:



Mrs Strange



Mrs Rahmen

Reverend Owen Green

Owen leads a Collective Worship assembly each week. He also works with us across the school.



Safeguarding



Safeguarding and Child Protection Worried about a Child?



If you have a concern about the safety or well-being of a child, please speak to one of our safeguarding team. In this school this is:-



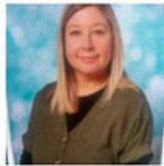
Sharon Bishop
Designated
Safeguarding Lead



Sally Telling
Deputy Designated
Safeguarding Lead



Naomi Luckman
Deputy Designated
Safeguarding Lead



Jodie Lane
Deputy Designated
Safeguarding Lead



Hannah Baddeley
Deputy Designated
Safeguarding Lead

Please contact 'Contact Swindon' if you are concerned about a child.

E-mail: contactswindon@swindon.gov.uk

Telephone: 01793 464646

**8.30am to 4.40pm Monday to Thursday 8.30am to 4.00pm
Friday**

**The Emergency Duty Service (EDS) is available outside
office hours on**



01793 436699

**If you think that a child is in immediate danger, please ring
999 and speak to the police.**

Reading



We are committed as a school to ensuring all children develop the skills they need to read independently and have access to life long learning. Our team believe in ensuring all children find themselves represented in books. We aim to expose our children to high quality, award winning and diverse literature.

Book change days

Monday Hand in Little Wandle and take home a sharing book

Monday is also Book Club Day where we share our books, discuss what we liked about them and recommend to each other.

Thursday Little Wandle book goes home after being read 3 times in school.

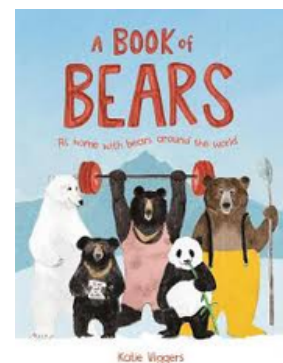
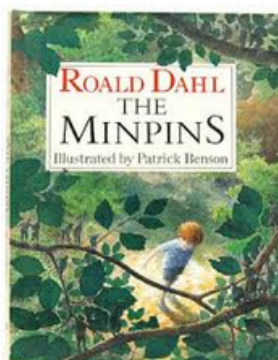
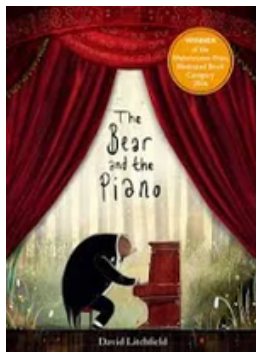
Author of the term



Our Author of the term is Smriti Halls who writes brilliant fiction and non fiction books.

Our Writing and Reading core texts

Our theme for English this term is Bravery and Fear and we will be using these texts for our writing and whole class reading



How you can help at home

Share books that your children bring home from school. Read any books you have at home. Read recipes, magazines, print in the environment. Let your children see you reading!

Reading



Reading Books - Year 2

Your child will bring home a reading for pleasure book on a Monday which you can share together. In year two they may well be able to read this independently but sharing books with loved ones builds positive bonds. They may like to read to you, read a page each or just enjoy being read to.

As we come towards the end of our Little Wandle journey many children will have read all the books up to and including Phase 5 and their decoding and fluency skills will be sufficient for them to choose their own books from a selection in the classroom. The Reading Framework states that teachers should not limit children by keeping them in a colour band once they are sufficiently fluent but children should be guided by their interests and what excites them. In Shireen class this means that on a Thursday they may bring home a free reading book of their choice. Please still read with them, explain unfamiliar vocabulary - they may be able to decode it and read fluently but not know the meaning, ask them questions, ask them to predict and summarise what they have read.

We will be continuing Whole Class Reading sessions this term, these sessions will use books that match our English theme and will focus on comprehension and meaning, vocabulary and skills such as prediction, summary and inference. Children who still need Little Wandle Reading practice sessions on phonically decodeable books will still receive these as appropriate and necessary and will bring home a book matched to their phonics ability on a Thursday. They will have read this in Reading Practice groups at school so should be able to read it fairly fluently - this is a great opportunity for them to show you their progress. There are questions in the back of the book that you can discuss with them too.

Phonics & Spelling



We will continue our phonics journey using Little Wandle which is the phonics and reading scheme at Kingfisher. Last term we completed a the Bridge to spelling programme which teaches them how to 'think about spelling'.

We have now moved onto the Year 2 Spelling units which teach spelling rules such as adding suffixes, silent letters etc. Some children will continue to consolidate their Phase 3 learning ensuring that they know alternative graphemes and can apply them in their writing.

Week 3	2	Why do I drop the 'e' when I add the suffixes -ed, -ing, -er, -est and -y?	any many	one/won
Week 4				
Week 5	3	Why do some words end 'ge' or 'dge'? Why can /j/ be spelled 'j' or 'g' in different words?	<i>Review</i>	where/wear
Week 1	4	The 'W special' How do 'w' and 'qu' change the sounds that 'a', 'ar' and 'or' make in some words?	who whole	our/hour
Week 2				
Week 3	5	Why do I swap the 'y' for an 'i' when I add the suffix -es?	people friend	quite/quiet

What you will need...

P.E.

PE will be on a **FRIDAY**. Please send your child to school with their PE kit on. Please remember our PE uniform is a white polo shirt, navy/black shorts or trousers and plain trainers or daps. They will be in this all day, so please ensure it is weather appropriate.



Outdoor learning and breaktimes

We will be doing regular outdoor learning and try to have our breaktime outside every day. Please make sure that children always bring a coat and wellies so we can get outside and enjoy the fresh air.



PLEASE LABEL EVERYTHING!

Christian Authenticity



In Collective Worship...

This term our value is resilience. In our collective worship we will be focusing on stories from the Bible and elsewhere that reflect this. Our Collective worship with Owen now takes place in our Chapel which is a lovely calm and peaceful space.



Child of Hope



We are maintaining our relationships with the community at the Child of Hope school in Uganda.

Each class wrote letters to the children in their matching age class. We are sending them a book of our class author, lots of reading books and our class photo. We are looking forward to receiving letters back from our class friends in Uganda. Later on in the Year we will have a day of activities to grow our links further.



Festivals

We continue to celebrate the countries we are from, our different cultures and languages that we can speak. Please let us know if your family have any celebrations this term you would like to come in and share with us.

