



Year Two News

Welcome back!

We hope you had a lovely week making memories with your little people! Even the sun decided to make appearance for a few days and signs of Spring are starting to appear.

Our value for this term is wisdom. We will be making links to knowledge we already have, seeing how much progress we have made and working on new targets for the term. We are looking forward to the weather warming up, the days getting lighter and Spring being in the air. We have new clubs starting this term and some events to welcome you into school for.

Have a look at the dates page of the newsletter so you know what is coming up and the termly overview for what we will be getting up to in class.

If you have any questions regarding the information in this newsletter, or other more general queries, please don't hesitate to talk to us.

Thank you,

The Year Two Team



Don't forget to follow us on...



@KingfisherCE



Kingfisherceacademy

"Discovering and Learning Together, so all can Flourish".

'A tree planted by streams of water, which yields its fruit in season' (Psalm 1:3)

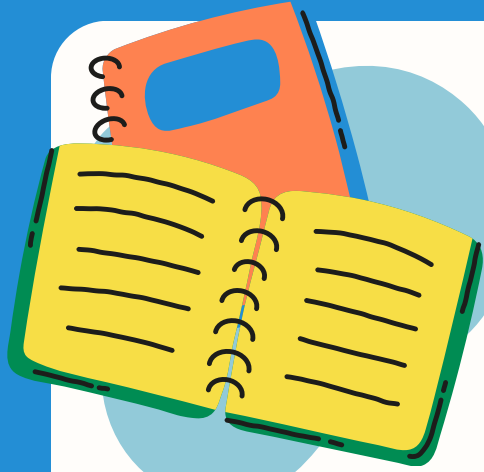
Wisdom – Hope – Service – Resilience



Kingfisher
CE ACADEMY

Wichelstowe Trinity
Learning Campus

LIFE IN ALL ITS FULLNESS



Important updates

Please remember school begins at **8.45am**. This is when children begin their learning. Please be on time. The hall doors will then be shut and the playground gate locked at **8.55am**. This is to safeguard all our children.

Don't forget to book your school lunches for the term on the Schools Food United app.

Please name ALL uniform to ensure it gets back to you.



PE day will be Thursday and Friday for term 4. We will be continuing our Woodland Wanders so please continue to bring in spare /wet weather clothes.

We are a mobile free zone. We would appreciate all phones to be switched off or put away on the playground. Please greet your child with a smile and not your phone!

Term dates

- Thursday 6th March - World Book Day
- Monday 10th March - National Science Week - more details to follow
- Friday 21st March - Red Nose Day.
- Wednesday 26th March - Parents' Evening 1.30-6pm. SCHOOL CLOSSES AT 1pm.
- Thursday 27th March - EYFS Make a Noise concert at the Platform 3.45pm
- Friday 28th March - Explorer Dome
- Monday 31st March - Mother's Day Afternoon tea - details to follow.
- Thursday 3rd April - Year 2 Class Assembly
- Friday 4th April - End of term - SCHOOL CLOSSES AT 1.00PM

Don't forget to follow us on...



@KingfisherCE



KingfisherCEacademy

"Discovering and Learning Together, so all can Flourish".



A tree planted by streams of water, which yields its fruit in season' (Psalm 1:3)

Term overview



Each term we will send you an overview of our learning in each area of the curriculum for the term. You can also find it on the website. It looks like this:

**Year 2-
Term 4**

English
If all the world were...

- Non-narrative read-aloud poem
- Writing in role, diaries, letters of advice, short explanations

Grandad's Camper

- Sequel narratives
- Labels, memories poems, interviews, photo album captions, postcards

WORLD BOOK DAY

Geography

- Where is Uganda?
- Locate on a world map
- What are the human and physical features of Uganda?
- What is the climate like?
- Compare to UK
- What crops are grown in Uganda?
- Why would someone visit Uganda?

Maths

- Fractions
- Measures - mass and length/height
- Statistics

Art

- Who was Henri Matisse, timeline, examples, media and techniques
- large scale individual composition

Science
Plants

- Investigate & describe how plants need water, light and a suitable temperature to grow and stay healthy.
- Describe what plants need to survive and link it to where they are found (environments/compare).
- Explain how plants grow and reproduce in different ways (compare).

PE
Ball Skills

- develop basic throwing and catching skills
- enhance accurate throwing to a partner
- introduce catching from different heights and angles
- develop throwing at a stationary target
- incorporate movement into throwing and catching activities
- apply throwing and catching skills in target games

RE

How and Why do Muslims celebrate special and sacred times
Identify that objects and items that are important to Muslims.
Describe what Muslims celebrate

DT

- Identify types of bag to carry a book and pencils?
- Design and make an envelope pouch bag and decorate using Ugandan Patterns
- Evaluate - How does my design fit the criteria?

Computing-
Data & Information - Pictograms

- understand what data means and how this can be collected in the form of a tally chart.
- learn the term 'attribute' and use this to help them organise data.
- presenting data in the form of pictograms and finally block diagrams.
- use the data presented to answer questions.

Fitness

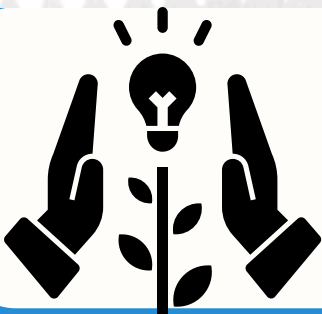
- perform simple movements to improve agility.
- develop coordination through complex sequences.
- increase flexibility through dynamic activities.
- enhance strength using bodyweight exercises.
- improve endurance with sustained activities.
- consolidate skills and evaluate personal development.

PSHE -Health and wellbeing

Understand and discuss:

- keeping safe online
- rules for safety
- trusted adults
- dangers around the house
- water and fire safety

Our value for the term is Wisdom



Our team



There are lots of people who are part of our extended Kingfisher family. You and your children may see them around the campus.

Senior Leadership Team



Ms Bishop
(our Headteacher
and Designated
Safeguarding Lead)



Miss Telling
(Deputy Head, SENCO
and Deputy Designated
Safeguarding Lead)



Mrs Bishop
(Campus Co-Ordinator)

Our Nursery Team



Mrs Lane
(Nursery Manager
- Pre-School)



Miss Watts
(Deputy Nursery Manager -
Two year olds)



Mrs Engley



Mrs Khan



Mrs Brown

(EYFS Teaching Assistants)

Our EYFS Team



Miss Telling
Reception Teacher



Mrs Dixon
Reception Teacher

Our key Stage 1 Team



Miss Bowron
(Year 1 teacher)



Mrs Connell
(Year 2 teacher)

Our key Stage 2 Team



Miss Baddeley
(Year 3 teacher, Curriculum Leader,
Deputy Designated Safeguarding Lead)

Our team



Our Teaching Assistants

Our team have so many different skills and experiences. They work across the school to utilise these:



Mrs B



Jill



Mrs Sara



Mary



Mrs Shim



Miss Coe
(our Higher Level Teaching Assistant who will work across the school)

Admin Team

Our Kingfisher Admin will be front of house to answer your questions and provide you with support:



Mrs Strange



Mrs Rahmen

Reverend Owen Green

Owen leads a Collective Worship assembly each week. He also works with us across the school.



Safeguarding



Safeguarding and Child Protection Worried about a Child?



If you have a concern about the safety or well-being of a child, please speak to one of our safeguarding team. In this school this is:-



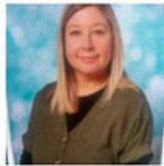
Sharon Bishop
Designated
Safeguarding Lead



Sally Telling
Deputy Designated
Safeguarding Lead



Naomi Luckman
Deputy Designated
Safeguarding Lead



Jodie Lane
Deputy Designated
Safeguarding Lead



Hannah Baddeley
Deputy Designated
Safeguarding Lead

Please contact 'Contact Swindon' if you are concerned about a child.

E-mail: contactswindon@swindon.gov.uk

Telephone: 01793 464646

**8.30am to 4.40pm Monday to Thursday 8.30am to 4.00pm
Friday**

**The Emergency Duty Service (EDS) is available outside
office hours on**



01793 436699

**If you think that a child is in immediate danger, please ring
999 and speak to the police.**

Reading



We are committed as a school to ensuring all children develop the skills they need to read independently and have access to life long learning.

Our team believe in ensuring all children find themselves represented in books.

We aim to expose our children to high quality, award winning and diverse literature.

Book change days

Monday Hand in Little Wandle and take home a sharing book

Monday is also Book Club Day where we share our books, discuss what we liked about them and recommend to each other.

Thursday Little Wandle book goes home after being read 3 times in school. Free reading books can be changed at any time but please make sure they are in school everyday as we do get a chance to read them after lunch.

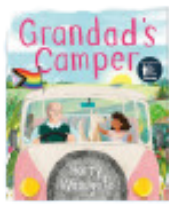
Author of the term



Our Author of the term is Mini Grey who writes brilliant fiction books.

Our Writing and Reading core texts

Our theme for English this term is Change and Relationships and we will be using these texts for our writing and whole class reading



How you can help at home

Share books that your children bring home from school. Read any books you have at home. Read recipes, magazines, print in the environment. Let your children see you reading!

Reading



Reading Books - Year 2

Your child will bring home a reading for pleasure book on a Monday which you can share together. In year two they may well be able to read this independently but sharing books with loved ones builds positive bonds. They may like to read to you, read a page each or just enjoy being read to.

As we come towards the end of our Little Wandle journey many children will have read all the books up to and including Phase 5 and their decoding and fluency skills will be sufficient for them to choose their own books from a selection in the classroom. The Reading Framework states that teachers should not limit children by keeping them in a colour band once they are sufficiently fluent but children should be guided by their interests and what excites them. In Shireen class this means that on a Thursday they may bring home a free reading book of their choice. Please still read with them, explain unfamiliar vocabulary - they may be able to decode it and read fluently but not know the meaning, ask them questions, ask them to predict and summarise what they have read.

We will be continuing Whole Class Reading sessions this term, these sessions will use books that match our English theme and will focus on comprehension and meaning, vocabulary and skills such as prediction, summary and inference. Children who still need Little Wandle Reading practice sessions on phonically decodeable books will still receive these as appropriate and necessary and will bring home a book matched to their phonics ability on a Thursday. They will have read this in Reading Practice groups at school so should be able to read it fairly fluently - this is a great opportunity for them to show you their progress. There are questions in the back of the book that you can discuss with them too.

Phonics & Spelling



We will continue our phonics journey using Little Wandle which is the phonics and reading scheme at Kingfisher.

We have now moved onto the Year 2 Spelling units which teach spelling rules such as adding suffixes, silent letters etc. Some children will continue to consolidate their Phase 3 learning ensuring that they know alternative graphemes and can apply them in their writing.

Unit	Coverage	Prickly spellings	Homophones
6	Why do some words have the spelling 'ey' for the sound /ee/?	move improve	see/sea
7	Why do some words end -le, -al, -il or -el?	<i>Review</i>	to/too/two

Unit	Coverage	Prickly spellings	Homophones
8	Why does 'c' make the sound /s/ in some words?	beautiful laugh	here/hear
9	How can I spell the sound /zh/?	busy pretty	be/bee
10	What happens when I add the suffixes -ment, -ness, -ful -less and -ly to a root word?	parents because	bare/bear
11	How can I show missing letters in a word?	<i>Review</i>	there/their/ they're

What you will need...

P.E.

PE will be on a **Thursday** and **Friday**. Please send your child to school with their PE kit on. Please remember our PE uniform is a white polo shirt, navy/black shorts or trousers and plain trainers or daps. They will be in this all day, so please ensure it is weather appropriate.



Woodland Wanders and breaktimes

We are hoping to continue our Woodland wanders - a change of clothes, wellies and waterproofs on Fridays please.

We try to have our breaktime outside every day. Please make sure that children always bring a coat and wellies so we can get outside and enjoy the fresh air.



PLEASE LABEL EVERYTHING!

Christian Authenticity



In Collective Worship...

This term our value is Wisdom. In our collective worship we will be focusing on stories from the Bible and elsewhere that reflect this.



Child of Hope



We are maintaining our relationships with the community at the Child of Hope school in Uganda.

In Geography and DT this term we are making links with Child of Hope and using their resources such as photographs and videos to get a real understanding of Life in Uganda. We are hoping to have some live video link lessons together too. Later on in the Year we will have a day of activities to grow our links further.



Festivals

We will be learning about Shrove Tuesday, Lent, Easter and celebrating Mother's Day this term.

We continue to celebrate all our families' cultures. This term we will be learning about Ramadan and Eid.



Safeguarding

Please contact 'Children and Families Contact Swindon' if you are concerned about a child.

E-mail:

Contact childrenandfamilies@swindon.gov.uk

Telephone: 01793 464646

8.30am to 4.40pm Monday to Thursday

8.30am to 4.00pm Friday

The Emergency Duty Service (EDS) is available outside office hours on

01793 436699

If you think that a child is in immediate danger, please ring 999 and speak to the police.

Artists wanted

Art week upcoming

In term 6, the week commencing DATE, Kingfisher will be getting creative! The children will be getting involved in various activities, lessons and projects over the week.



Art class

We would love for the children to have the opportunity to have a whole school art class from an artist or a very keen and talented artist. If you are interested in teaching our children how to paint or draw something, then please contact Mrs Dixon (Hart Class, Year R/1 class).



Donations

Some of the activities planned we may ask for some donations or contributions to so that each child is able to use and have access to. We will ensure we let you know in enough notice so that if items such as for junk modelling are required, we can let you know before recycling days! Thank you in advance.