



Reception Newsletter Term 1

Welcome message

We hope you and your child have enjoyed a restful summer and have recharged the batteries. The first few days of the year at Kingfisher are all about settling in, renewing and forming friendships and getting to know routines and expectations.

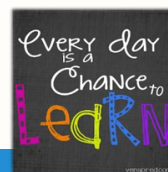
Moving year groups and having a new teacher is a big transition, hopefully our discovery days have made that change easier. This newsletter will give you some key information about the term ahead.

We will be talking about ourselves, learning about each other and then celebrating our similarities and differences. We will discover that we are part of our family, our new classes and our school community. We are learning collaboratively within both our class and our outdoor area to maximise our learning opportunities.

We look forward to getting to know you all better. If you have any questions regarding the information in this newsletter, or other more general queries, please don't hesitate to talk to us.

Thank you,

The Reception Team



Don't forget to follow us on...



@KingfisherCE



Kingfisherceacademy



Kingfisher
CE ACADEMY

"Discovering and Learning Together, so all can Flourish".

'A tree planted by streams of water, which yields its fruit in season' (Psalm 1:3)

Wisdom – Hope – Service – Resilience

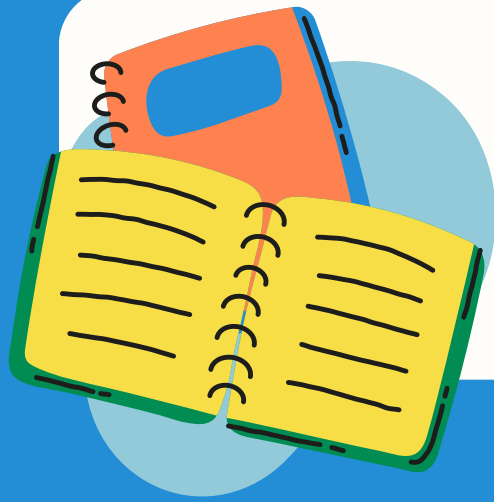


Wichelstowe Trinity
Learning Campus

LIFE IN ALL ITS FULLNESS

Term dates

- **Wednesday 3rd September** - First day of term 1.
- **Tuesday 9th September** Visitor in from Child of Hope School
- **Meet the Teacher** - 3.30 in classrooms.
- **Tuesday 16th September** - Phonics and Reading Workshop 9.00 in hall
- **Monday 22nd September** - Individual school photos. There will be an opportunity for sibling photos. Details to follow.
- **Tuesday 23rd September** - Harvest Service 2.30 pm.
- **Wednesday 24th September** Flu Immunisations. Details to follow.
- **Friday 26th September** MacMillan Coffee morning for parents.
- **Give and Learn Day** - Child of Hope project.
- **Monday 29th September** - Performing Arts Workshop for years 1-4.
- **Wednesday 1st October** Maths Workshop 9.00 in hall.
- **Tuesday 7th October** Athlete Visit and workshops.
- **Tuesday 21st October** Open classrooms 3.15 - 4.00.
- **Thursday 23rd October** End of term assembly with parents 2.15.
- **Thursday 23rd October 2-** End of term 1 3.15 finish.
- **Friday 24th October 2025** - Inset day (school closed to children)



Beginning and end of the school day.

Please remember school begins at 8.45 am. This is when children begin their learning. Please be on time. The classroom and hall doors will then be shut and the playground gate locked at 8.55 am. This is to safeguard all our children.

Pick up is at 3.15 pm from either the classroom door for Bryon Class or the far left (as you look at it from the playground) hall door for Anganuzzi Class.

If someone else is picking up, please inform the class teacher on the door in the morning or the school office during the day. If it is someone not known to us, you will be asked to set up a password so the teacher on the door knows that this is the agreed pick up. We will not let children go with an unknown adult or with a known adult without prior knowledge of the arrangement. This is of course to safeguard our children.



We are a mobile free zone. We would appreciate all phones to be switched off or put away on the playground. Please greet your child with a smile and not your phone. We know from many years experience that asking how their day was or asking what they did today, is usually met with Ok, I don't know or similar. At the end of the day we have a Five to Flourish discussion when we ask them to think of things they are proud of, they have learned, something that links to our values of embracing hope, building resilience, developing wisdom and choosing service. This may help you have a more productive conversation.

Don't forget to follow us on...



@KingfisherCE



Kingfisherceacademy



"Discovering and Learning Together, so all can Flourish".

'A tree planted by streams of water, which yields its fruit in season' (Psalm 1:3)

Wisdom – Hope – Service – Resilience



Kingfisher
CE ACADEMY

Wichelstowe Trinity
Learning Campus
LIFE IN ALL ITS FULLNESS

What you will need...

P.E.

Percival Class PE will be on a **Tuesday** and a **Thursday**.

Please send your child to school with their PE kit on. Please remember our PE uniform is a white polo shirt, navy/black shorts or trousers and plain trainers or daps. A Kingfisher logoed sweater or non logoed blue sweater is also essential.

They will be in this all day, so please ensure it is weather appropriate.



Outdoor learning

We will often pop outside in our lessons, please make sure that children always bring a coat so we can get outside. If they have a spare set of wellies that could be left in school, this would be useful. A coat with a hood is much better than an umbrella.



PLEASE LABEL EVERYTHING!

Meet the Teacher



About Me

Hi! My name is Miss Bowron and I am the reception teacher. Our children are four and five years old.

I Love working in EYFS and have over 20 years experience! I have a passion for reading and inspiring a joy of learning. When I'm not at school I enjoy swimming, walking and growing vegetables in my allotment..

A bit about me!

Favourite colour: rainbow, I love
all the colours

Favourite animal: dog

Favourite drink: tea

Favourite subject: Science



Our Class Author

All our classes at Kingfisher CE Academy are named after authors. My class is named after Tom Percival. He has written many children's books. Tom Percival grew up in a remote part of South Shropshire in a small caravan without electricity, mains water or any sensible form of heating.



Our class novel is called 'The Sea saw'. It is a story that explores how nothing is truly lost if it is cherished in your heart

I have sent a copy to share with you. I hope you enjoy reading it!



Termly Overview



Each term we will send you an overview of our learning in each area of the curriculum. You can also find it on the website. It looks like this:

Personal, Social and Emotional Development

This term we will be:

- getting to know each other, making friends and becoming familiar with school routines
- trying new activities, learning to share and taking turns
- identifying and naming our basic emotions

Physical Development

We will be learning to:

- put on our cardigans, jumpers and coats by ourselves
- take our shoes, socks and tights off by ourselves and then put them back on
- experiment with different ways of moving
- develop an effective pencil grip and begin to form recognisable marks, shapes and letters
- use scissors effectively and safely
- develop our gross motor skills, core and shoulder strength

Communication and Language

We will be learning to:

- listen carefully, share our ideas with each other trying to use full sentences and respond to what others have said with a relevant response
- join in with familiar stories, rhymes and songs
- respond to simple instructions and ask questions

Maths

In Reception we will be learning to:

- recognise numerals 0-3
- match numerals and quantities
- count objects using one number name for each object
- count irregular groups of objects
- count actions or objects which can't be moved e.g. jumps, claps



Kingfisher
OF ACADEMY



Wichelstowe Trinity
Learning Campus
LIFE IN ALL ITS FULLNESS

Understanding the World

We will be learning:

- about ourselves, each other and our families
- how we have grown and changed since being a baby
- to notice changes in the outdoors through Welly Walks and outdoor learning
- about the season of Autumn and events which take place such as Harvest

Expressive Arts and Design

We will be learning to:

- create self-portraits using a variety of resources
- mix colours
- make marks, lines and shapes
- listen to and discriminate between sounds, sing songs and dance to music

Literacy

In Reception we will be learning to:

- enjoy listening to and joining in with familiar rhymes and stories
- recognise familiar words and signs
- recognise and write our name
- begin to form recognisable letters
- link sounds to letters using Little Wandle
- hear and say initial sounds in words
- hear and recognise when words rhyme

Our focus in term 1 will be on Psalm 1:3 and what that means to us at Kingfisher. We will also be learning about all four of our values and how they align with this Psalm.

Discovering and Learning Together, so all can Flourish.

'A tree planted by streams of water, which yields its fruit in season' (Psalm 1:3)



Phonics



We will begin learning phonics using Little Wandle which is the phonics and reading scheme at Kingfisher. Children will learn a new phoneme each day and begin to blend them to read and use them to write.

Phase 2 Sound Mat

s	a	t	p	i	n	m	d
g	o	c	k	ck	e	u	r
h	b	f	l	j	v	w	x
y	z	qu	th	sh	ch	ng	nk

Tricky words

is I the put pull full as
and has his her go no to
into she push he of we me be

Book change day

Please ensure books are in your child's book bags for Monday to be collected in. We have Book Club every Monday where we share books, discuss what we like about them and recommend to each other. When your child begins to bring home a phonics book they will begin with wordless books to encourage oral sentence formations and story telling. Your child's new phonics book will be sent home on a Thursday after they have read it three times in class.

How you can help at home

Share books that your children bring home from school and read any you have at home. Read recipes, magazines, print in the environment. Let your children see you reading!

Christian Authenticity



In Collective Worship...



In our Values assembly on Mondays, we will be learning about psalm 1:3 and think about how our values are reflected in this and what this means for us as Christians. We always start by welcoming God, then we listen and respond before singing and having a reflection.

On Tuesday we have a assembly with our Chaplain, Owen, in our Chapel. He uses a resource that has been especially written for KSI and is the next in the series from Jack in the Box which they loved in Reception and Y1. Each assembly follows the familiar pattern: Welcome, Learn, Reflect, Respond and as Oscar the Owl 'flies' out of the box he invites children to become involved in each part of the worship journey.

On Wednesday we have a Class Worship – following the same pattern linking a bible story to the book/story from Monday's assembly.

Thursday is a Singing Assembly, learning and worshipping through song, as well as learning songs for events and performances.

Our Friday Celebration Assembly celebrates the learning both inside and outside of school. It's a time for recognition and celebration of our brilliant Kingfishers.



We are maintaining our relationships with the community at the Child of Hope school in Uganda.

Each class will write letters to the children in their matching age class. We are sending them a book of our class author, lots of reading books and our class photo.

We are looking forward to receiving letters back from our class friends in Uganda.

Later on in the Year we will have a day of activities to grow our links further.



Festivals

Later in the term we will be celebrating the festival of Harvest. We will be holding a whole school Harvest Festival Assembly. Please come along to support and celebrate with us!





Kingfisher
CE ACADEMY

Our Kingfisher team

There are lots of people who are part of our extended Kingfisher family. You and your children may see them around the campus.

Senior Leadership Team



Ms. Bishop (Headteacher and Designated Safeguarding Lead)



Miss Telling (Deputy Headteacher and Designated Safeguarding Lead)



Mrs Bishop (Campus Co-ordinator)

Our EYFS Teaching Team



Mrs Lane
(Nursery Manager)



Miss Watts
(Deputy Nursery Manager)



Miss Bowron
(Reception Teacher)

Our Key Stage 1 Teaching Team



Mrs Connell
(Year 1/2 teacher)



Mrs Dixon
Year 1/2 teacher
(M/T/W)



Miss Telling
(Year 1/2 teacher) Th/F



Miss Coe
(Higher Level Teaching Assistant)



Mrs B
(Senior Teaching Assistant)

Our Key Stage 2 Teaching Team



Miss Baddeley
(Year 3/4 teacher)



Miss Small
(Year 3/4 teacher)

Miss Coe and Mrs B will work across the school covering classes.

Our Kingfisher team

Our Support Staff

We are lucky to be supported by a wonderful team across the school.

Our Teaching Assistants



Jill Armour



Miss Sara



Mrs Brown



Sam Engley



Mrs Khan



Mrs Shim



Mary



Bianca



Bernie

Admin Team

Our Kingfisher Admin will be front of house to answer your questions and provide you with support:



Mrs Wright



Mrs Ryan



Mrs Strange

Our Chaplain



Owen leads a Collective Worship assembly each week. He also works with us across the school.

Reverend Owen Green

Safeguarding



Discovering and Learning Together, so all can Flourish.
'A tree planted by streams of water, which yields its fruit in season' (Psalm 1:3)
Wisdom – Hope – Service – Resilience



Safeguarding and Child Protection Worried about a Child?

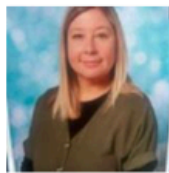
If you have a concern about the safety or well-being of a child, please speak to one of our safeguarding team. In this school this is:-



Sharon Bishop
Designated
Safeguarding Lead



Sally Telling
Deputy Designated
Safeguarding Lead



Jodie Lane
Deputy Designated
Safeguarding Lead



Natalie O'Donnell
Deputy Designated
Safeguarding Lead



Hannah Baddeley
Deputy Designated
& Online safety
Safeguarding Lead



Please contact 'Children and Families Contact Swindon' if you are concerned about a child.

E-mail: Childrenandfamiliescontact@swindon.gov.uk

Telephone: 01793 464646

8.30am to 4.40pm Monday to Thursday 8.30am to 4.00pm Friday

The Emergency Duty Service (EDS) is available outside office hours on

01793 436699

If you think that a child is in immediate danger, please ring 999 and speak to the police.

