



Reception Newsletter Term 3

Welcome back!

We hope you and your family have enjoyed the the Christmas break however you celebrate. Thank you again for all your support with our Nativity. It was fabulous and hopefully lots of memories made!

As we move into a busy term 3 there are lots of events happening. This newsletter will give you some key information about the term ahead.

We will be learning about resilience and this value weaves into much of our learning this term. Our learning will continue to teach knowledge and skills and give the children opportunities to apply them in different contexts to maximise their learning opportunities and stickability.

If you have any questions regarding the information in this newsletter, or other more general queries, please don't hesitate to talk to us. We can't wait to see all the smiling faces back at school and to share a fantastic term together!

Thank you,
Reception team



Don't forget to follow us on...



@KingfisherCE



Kingfisherceacademy



Kingfisher
CE ACADEMY

"Discovering and Learning Together, so all can Flourish".

'A tree planted by streams of water, which yields its fruit in season' (Psalm 1:3)

Wisdom – Hope – Service – Resilience



Wichelstowe Trinity
Learning Campus

LIFE IN ALL ITS FULLNESS

Term dates

05/1/26 Term 3 starts - Welcome back!

07/1/26 Swimming Continues for Y4

13/1/26 Young Voices Concert in Birmingham - KS2

18/1/26 World Religions Day - Whole School

23/01/26 Y1 Drumming Assembly at 9.30am - Y1
parents invited

31/1/26 National Story Telling week

04/02/26 POPs Parents Evening 3.30pm to 6pm -
Invites to parents

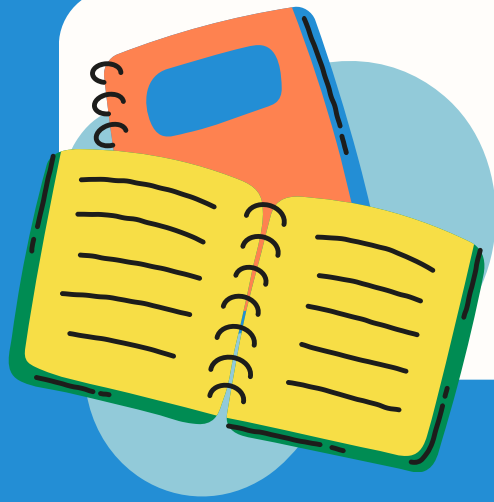
6/2/26 National Number day- Come dressed as a
number

10/2/26 Safer Internet Day - Whole School

13/2/26 Anganuzzi Class Assembly - 2.30pm Parents
welcome

13/2/26 End of term - School closes at 3.15pm






Beginning and end of the school day.



Please remember school begins at 8.45 am. This is when children begin their learning. Please be on time. The classroom and hall doors will then be shut and the playground gate locked at 8.55 am. This is to safeguard all our children.

Pick up is at 3.15 pm from either the classroom door for Bryon Class or the far left (as you look at it from the playground) hall door for Anganuzzi Class.

If someone else is picking up, please inform the class teacher on the door in the morning or the school office during the day. If it is someone not known to us, you will be asked to set up a password so the teacher on the door knows that this is the agreed pick up. We will not let children go with an unknown adult or with a known adult without prior knowledge of the arrangement. This is of course to safeguard our children.

We are a mobile free zone. We would appreciate all phones to be switched off or put away on the playground. Please greet your child with a smile and not your  phone. We know from many years experience that asking how their day was or asking what they did today, is usually met with Ok, I don't know or similar. At the end of the day we have a Five to Flourish discussion when we ask them to think of things they are proud of, they have learned, something that links to our values of embracing hope, building resilience, developing wisdom and choosing service. This may help you have a more productive conversation.

Don't forget to book your school lunches for the term on the Schools Food United app.



Don't forget to follow us on...



@KingfisherCE



Kingfisherceacademy



"Discovering and Learning Together, so all can Flourish".

'A tree planted by streams of water, which yields its fruit in season' (Psalm 1:3)

Wisdom – Hope – Service – Resilience



Kingfisher
CE ACADEMY



Wichelstowe Trinity
Learning Campus

LIFE IN ALL ITS FULLNESS

What you will need...

P.E.

A PE will be on a **Tuesday** and a **Thursday**.

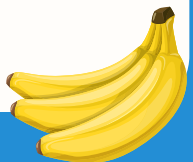
Please send your child to school with their PE kit on. Please remember our PE uniform is a white polo shirt, navy/black shorts or trousers and plain trainers or daps. A Kingfisher logoed sweater or non logoed blue sweater is also essential.

They will be in this all day, so please ensure it is weather appropriate.



Outdoor learning

We will often pop outside in our lessons, please make sure that children always bring a coat so we can get outside. If they have a spare set of wellies that could be left in school, this would be useful. A coat with a hood is much better than an umbrella.



PLEASE LABEL EVERYTHING!

Termly Overview



Each term we will send you an overview of our learning in each area of the curriculum. You can also find it on the website. It looks like this:

Personal, Social and Emotional Development

We will be learning to:

- Set goals for ourselves to achieve
- Build and develop storylines together
- Persevere through challenges
- Develop our resilience
- Apply what we have learned about problem solving
- Use technology safely and understand about sensible amounts of screen time

Physical Development

We will be learning to:

- Put on and fasten our own coats, socks, shoes and gloves
- Build our finger strength and mobility through fine motor activities
- Hold a pencil correctly
- Form all letters and numbers correctly
- Learn different ways to travel, hold our body in balances and create sequences using these

Communication and Language

We will be learning to:

- Share ideas with others
- Listen to others in a variety of situations
- Join in with familiar stories, rhymes and songs
- Respond to more complex instructions
- Understand and use topic related vocabulary
- Ask questions and develop explanations

Maths

In Reception we will be learning to:

- recognise numerals 0-10
- match numerals and quantities
- count objects using one number name for each object
- count irregular groups of objects
- count actions or objects which can't be moved e.g. jumps, claps



Percival class -Term 3



Understanding the World

We will be learning to:

- Describe seasonal changes from Autumn to Winter
- Learn about festivals that are celebrated in other countries and how they differ to the ones we celebrate
- Identifying properties of materials and sorting them
- Investigating the properties of materials
- Recognise and explain changes in state - freezing and thawing
- Understand how cultures have different celebrations and special times

Expressive Arts and Design

We will be learning to:

- How to manipulate clay and create a piece of art by following a design that we have created
- Use tools to make different textures in the clay
- listen to and discriminate between sounds, sing songs and dance to music

Literacy

In Reception we will be learning to:

- enjoy listening to and joining in with familiar rhymes and stories
- recognise familiar words and signs
- form recognisable letters
- Recognise digraphs in words and blend with them
- Write simple captions
- Read and spell tricky words
- hear and recognise when words rhyme

Our focus in term 3 will be on **Resilience** and what that means to us at Kingfisher. We will also be learning about **Rule of Law** and what this looks like at Kingfisher. .

Discovering and Learning Together, so all can Flourish.

'A tree planted by streams of water, which yields its fruit in season' (Psalm 1:3)



Reading



We are committed as a school to ensuring all children develop the skills they need to read independently and have access to life long learning. Our team believe in ensuring all children find themselves represented in books. We aim to expose our children to high quality, award winning and diverse literature.

Book change days

Monday Hand in Little Wandle and sharing book. Take home a new sharing book.

Monday is also Book Club Day where we share our books, discuss what we liked about them and recommend to each other.

Thursday New Little Wandle book goes home after being read 3 times in school.

Phonics vs sharing books

Monday's book you can share together. They are not supposed to be able to read this!

Thursday's book is for children to read to you. Once children are confident with blending, they will bring home a book with words in. Please use the prompts in the covers of the books for phonemes to check, words to discuss and questions to answer.

Our core texts this term



- Stanley's stick by John Hegley
- Little Red by Bethan Woollvin



Phonics



We will continue learning phonics using Little Wandle which is the phonics and reading scheme at Kingfisher. Children are assessed every six weeks and this is used to ensure they are taught what they need next.

Grow the code grapheme mat Phase 2, 3 and 5

S	s	t	p	n	m	d	g	c	r	h
ss	tt	pp	nn	mm	dd	gg	cc	rr		
c			kn	mb			ck	wr		
se			gn				cc			
ce							ch			
st										
sc										
b	f	l	j	v	w	x	y	z	qu	
bb	ff	ll	dg	vv	wh			zz		
	ph	le	ge	ve				s		
		al						se		
								ze		
ch	sh	th	ng	nk	a	e	i	o	u	
tch	ch					ea	y	a	o-e	
ture	ti								ou	
	ssi									
	ci									

Grow the code grapheme mat Phase 2, 3 and 5

ai	ee	igh	oa	oo	yoo	oo	ar
ay	ea	ie	o	ue	ue	u	a
a	e	i	o-e	u-e	u	oul	al
a-e	e-e	i-e	ou	ew	u-e		
eigh	ie	y	oe	ou	ew		
aigh	y		ow	ui			
ey	ey						
ea							
or	ur	ow	oi	ear	air	zh	
aw	er	ou	oy	ere	are	su	
au	ir			eer	ere	si	
aur	or				ear		
oor							
al							
a							
oar							
ore							

Tricky words

is I the put pull full as
and has his her go no to
into she push he of we me be

Tricky words

was you they my by all
are sure pure

How you can help at home

Ask children to spot the digraphs in a word.. Practice tricky words.

Practice blending simple words and encourage sharing their reading book daily.

Read with them, let them see you reading.

Christian Authenticity



In Collective Worship...



In our Values assembly on Mondays, we will be learning about psalm 1:3 and think about how our values are reflected in this and what this means for us as Christians. We always start by welcoming God, then we listen and respond before singing and having a reflection.

On Tuesday we have a assembly with our Chaplain, Owen, in our Chapel. He uses a resource that has been especially written for KSI and is the next in the series from Jack in the Box which they loved in Reception and Y1. Each assembly follows the familiar pattern: Welcome, Learn, Reflect, Respond and as Oscar the Owl 'flies' out of the box he invites children to become involved in each part of the worship journey.

On Wednesday, we have a Class Worship – following the same pattern linking a bible story to the book/story from Monday's assembly.

Thursday is a Singing Assembly, learning and worshipping through song, as well as learning songs for events and performances.

Our Friday, Celebration Assembly celebrates the learning both inside and outside of school. It's a time for recognition and celebration of our brilliant Kingfishers.



We are maintaining our relationships with the community at the Child of Hope school in Uganda.

Each class will write letters to the children in their matching age class. We are sending them a book of our class author, lots of reading books and our class photo.

We are looking forward to receiving letters back from our class friends in Uganda. Later on in the Year, we will have a day of activities to grow our links further.





Kingfisher
CE ACADEMY

Our Kingfisher team

There are lots of people who are part of our extended Kingfisher family. You and your children may see them around the campus.

Senior Leadership Team



Ms. Bishop (Headteacher and Designated Safeguarding Lead)



Miss Telling (Deputy Headteacher and Deputy Designated Safeguarding Lead)



Mrs Bishop (Campus Co-ordinator)

Our EYFS Teaching Team



Miss Watts
(Nursery Leader)



Miss Bowron
(Reception Teacher)

Our Key Stage 1 Teaching Team



Mrs Connell
(Year 1/2 teacher)



Mrs Dixon
Year 1/2 teacher
(M/T/W)



Miss Telling
(Year 1/2 teacher) Th/F



Miss Coe
(Higher Level Teaching Assistant)



Mrs B
(Senior Teaching Assistant)

Our Key Stage 2 Teaching Team



Miss Baddeley
(Year 3/4 teacher)



Miss Small
(Year 3/4 teacher)

Miss Coe and Mrs B will work across the school covering classes.

Our Kingfisher team

Our Support Staff

We are lucky to be supported by a wonderful team across the school.

Our Teaching Assistants



Miss Sara



Mrs Brown



Sam Engley



Mrs Khan



Mrs Shim



Mary



Bianca



Bernie

Admin Team

Our Kingfisher Admin will be front of house to answer your questions and provide you with support:



Mrs Wright



Mrs Ryan



Mrs Strange

Our Chaplain



Owen leads a Collective Worship assembly each week. He also works with us across the school.

Reverend Owen Green

Safeguarding



Discovering and Learning Together, so all can Flourish.
'A tree planted by streams of water, which yields its fruit in season' (Psalm 1:3)
Wisdom – Hope – Service – Resilience



Safeguarding and Child Protection Worried about a Child?

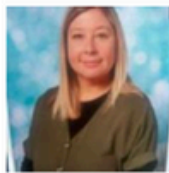
If you have a concern about the safety or well-being of a child, please speak to one of our safeguarding team. In this school this is:-



Sharon Bishop
Designated
Safeguarding Lead



Sally Telling
Deputy Designated
Safeguarding Lead



Jodie Lane
Deputy Designated
Safeguarding Lead



Natalie O'Donnell
Deputy Designated
Safeguarding Lead



Hannah Baddeley
Deputy Designated
& Online safety
Safeguarding Lead



Please contact 'Children and Families Contact Swindon' if you are concerned about a child.

E-mail: Childrenandfamiliescontact@swindon.gov.uk

Telephone: 01793 464646

8.30am to 4.40pm Monday to Thursday 8.30am to 4.00pm Friday

The Emergency Duty Service (EDS) is available outside office hours on

01793 436699

If you think that a child is in immediate danger, please ring 999 and speak to the police.

