



Reception Newsletter Term 6

Welcome back!

Welcome back to term 6 and our last class newsletter of the year!

As we near the end of the year, it is an exciting time where the children can start to look forward to meeting their new teacher and classroom. The children will have 4 discovery days (mornings and afternoons) where they will get to do fun activities with their new teacher, in their new classroom, in preparation for the new year.

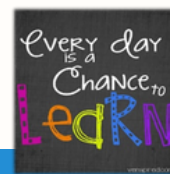
Once again, we have new clubs starting this term and some events to welcome you into school for such as our Literature Festival and class assembly.

This term we revisit all of our school values - Embracing hope, building resilience, developing wisdom and choosing service.

Look for the term dates on page 2 and keep an eye on Arbor for updates.

If you have any questions regarding the information in this newsletter, or other more general queries, please don't hesitate to talk to us.

Thank you,
Reception team



Don't forget to follow us on...



@KingfisherCE



Kingfisherceacademy

"Discovering and Learning Together, so all can Flourish".

'A tree planted by streams of water, which yields its fruit in season' (Psalm 1:3)

Wisdom - Hope - Service - Resilience



Kingfisher
CE ACADEMY

Wichelstowe Trinity
Learning Campus

LIFE IN ALL ITS FULLNESS

Term dates



Kingfisher CE Academy

DISCOVERING AND LEARNING TOGETHER, SO ALL CAN FLOURISH.
'A TREE PLANTED BY STREAMS OF WATER, WHICH YIELDS ITS FRUIT IN SEASON' (PSALM 1:3)
WISDOM – HOPE – SERVICE – RESILIENCE



TERM 6 EVENTS

1/6/26

Term 6 Starts - INSET DAY!

02/6/26

Year 4 Multiplication Check week

04/06/26

Star Speaker School Heats

05/06/26

Ukulele Concert - Parents of Y2 9:00 am

09/06/26

Phonics Check Screening Week

12/6/26

Star Speaker Final @ Orchid Vale

17/06/26

Reception '26' New Starters Evening
6-7 pm

19/06/26

Father's Day Breakfast 8 am to 8:45 am

23/06/26

EYFS educational visit

25/06/26

Discovery Day One - 12:30 - 3:15 pm.
Summer Fayre 4-6 pm

26/06/26

Rauf Class Assembly - 2.30 pm

29/06/26

Discovery Day Two - 12.30 - 3.15pm

Term dates



Kingfisher
CE ACADEMY

Kingfisher CE Academy

DISCOVERING AND LEARNING TOGETHER, SO ALL CAN FLOURISH.
A TREE PLANTED BY STREAMS OF WATER, WHICH YIELDS ITS FRUIT IN SEASON (PSALM 134)
WISDOM - HOPE - SERVICE - RESILIENCE



TERM 6 EVENTS

03/07/26

Sports day and School picnic - details to follow!

06/07/26

Literacy Festival Starts
Educational Visit Year 3&4

07/07/26

Educational Visit Year 1&2

08/07/26

Discovery Day Three 8.45 - 11:30

10/07/26

Literacy Quiz 2pm - parents invited
School Reports sent home

13/07/26

Smash Hits Concert - parents invited.

14/07/26

Bastille Day - School celebrating languages day

15/07/26

Discovery Day Four 8:45 - 11.15am

15/07/25

Optional Parents Evening - Individual bookings
Infant Voice Festival - KS1 pm

16/07/26

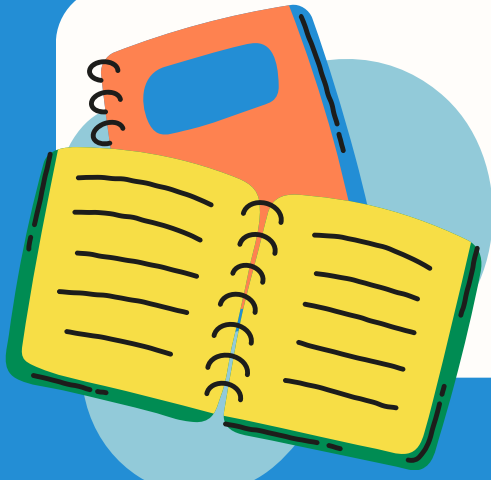
Cream Tea thank you for Volunteers (Chapel)
Percival Class Assembly-2:30pm (Hall)

17/07/26

Last day of the School Year! **School closes at 1pm.**

20/07/26

INSET DAY - No children



Beginning and end of the school day.



Please remember school begins at 8.45 am. This is when children begin their learning. Please be on time. The classroom and hall doors will then be shut and the playground gate locked at 8.55 am. This is to safeguard all our children.

Pick up is at 3.15 pm from the classroom door.

If someone else is picking up, please inform the class teacher on the door in the morning or the school office during the day. If it is someone not known to us, you will be asked to set up a password so the teacher on the door knows that this is the agreed pick up. We will not let children go with an unknown adult or with a known adult without prior knowledge of the arrangement. This is of course to safeguard our children.

We are a mobile free zone. We would appreciate all phones to be switched off or put away on the playground. Please greet your child with a smile and not your phone. We know from many years experience that asking how their day was or asking what they did today, is usually met with Ok, I don't know or similar. At the end of the day we have a Five to Flourish discussion when we ask them to think of things they are proud of, they have learned, something that links to our values of embracing hope, building resilience, developing wisdom and choosing service. This may help you have a more productive conversation.



Don't forget to book your school lunches for the term on the Schools Food United app.



Don't forget to follow us on...



@KingfisherCE



Kingfisherceacademy

"Discovering and Learning Together, so all can Flourish".

'A tree planted by streams of water, which yields its fruit in season' (Psalm 1:3)



Kingfisher
CE ACADEMY

Wisdom – Hope – Service – Resilience



Wichelstowe Trinity
Learning Campus

LIFE IN ALL ITS FULLNESS

What you will need...

P.E.

PE will be on a **Tuesday** and a **Thursday**.

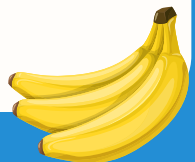
Please send your child to school with their PE kit on. Please remember our PE uniform is a white polo shirt, navy/black shorts or trousers and plain trainers or daps. A Kingfisher logoed sweater or non logoed blue sweater is also essential.

They will be in this all day, so please ensure it is weather appropriate.



Outdoor learning

We will often pop outside in our lessons, please make sure that children always bring a coat so we can get outside. If they have a spare set of wellies that could be left in school, this would be useful. A coat with a hood is much better than an umbrella.



PLEASE LABEL EVERYTHING!

Termly Overview



Each term we will send you an overview of our learning in each area of the curriculum. You can also find it on the website. It looks like this:

Personal, Social and Emotional Development

We will be learning to:

- Identify what changes happen in our lives and how we can prepare ourselves for transitions
- Understand our own feelings and how we can regulate them
- Be aware of how others are feeling and how to support them and how to solve conflict when playing and working with our friends
- Show resilience when solving problems and persevere through challenges
- Use technology safely

Maths

In Reception we will be learning to:

- Recognise and order numbers to 20
- Count backwards within 20
- Recall number bonds within 10 and related subtraction facts within 5
- Recognise and recall doubles
- Reason using number knowledge to identify odd and even numbers
- Order, measure and compare by length, height, weight, capacity, time
- Name and describe 2d and 3d shapes

Physical Development

We will be learning to:

- Hold a pencil to form letters and numbers correctly
- Develop our coordination and movement to demonstrate control, coordination and ability with multiple skills including throwing, running, catching, jumping and balancing
- Participate in team games

Communication and Language

We will be learning to:

- Share, listen and work in talk partners
- Use and apply topic related vocabulary
- Ask questions and develop explanations
- Using what we have heard in stories, non-fiction and through discussions, to develop our own understanding around topics



Kingfisher

Perical Term 6



Wichelstowe Trinity Learning Campus

Understanding the World

We will be learning to:

- Recognise similarities and differences between the past and now (homes, school, transport)
- Recognise where food comes from
- Recognise and describe changes in states (melting, freezing) and forces
- Explain similarities and differences between life in this country and other countries
- Learn about stories from the Bible that signifies the creation of our world and Christianity

Expressive Arts and Design

We will be learning to:

- Design, make and evaluate our own creations
- Use different joins to join materials together
- Share their creations, exploring colour, materials and different techniques then explaining the process they have used

Literacy

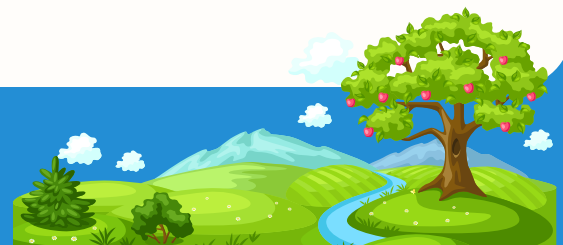
In Reception we will be learning to:

- Recognise digraphs in words and blend with them
- Read and write sentences applying phase 3 phonemes and knowledge of phase 4 (CVCC/CCVC)
- Use finger spaces in between each word and try to include some capital letters and full stops into our writing
- Read and spell tricky words
- Recall details about settings, characters and events
- Retell and develop familiar stories

In term 6 we revisit all our values with a focus on transition and change and what this looks like at Kingfisher.

Discovering and Learning Together, so all can Flourish.

'A tree planted by streams of water, which yields its fruit in season' (Psalm 1:3)



Reading



We are committed as a school to ensuring all children develop the skills they need to read independently and have access to life long learning. Our team believe in ensuring all children find themselves represented in books. We aim to expose our children to high quality, award winning and diverse literature.

Book change days

Monday Hand in Little Wandle and sharing book. Take home a new sharing book.

Monday is also Book Club Day where we share our books, discuss what we liked about them and recommend to each other.

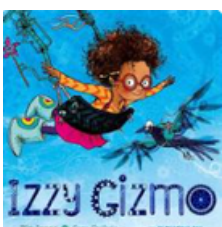
Thursday New Little Wandle book goes home after being read 3 times in school.

Phonics vs sharing books

Monday's book you can share together. They are not supposed to be able to read this!

Thursday's book is for children to read to you. Once children are confident with blending, they will bring home a book with words in. Please use the prompts in the covers of the books for phonemes to check, words to discuss and questions to answer.

Our core texts this term



-
-

Izzy Gizmo by Pip Jones
Hairy Maclary by Lynley Dodd



Phonics



We will continue learning phonics using Little Wandle which is the phonics and reading scheme at Kingfisher. Children are assessed every six weeks and this is used to ensure they are taught what they need next.

Grow the code grapheme mat Phase 2, 3 and 5

S	s	t	p	n	m	d	g	c	r	h
s	tt	pp	nn	mm	dd	gg	ck	rr		
ss			kn	mb			ck	rr		
c			gn				cc	wr		
se							ch			
ce										
st										
sc										
b	f	l	j	v	w	x	y	z	qu	
bb	ff	ll	jj	vv	wh			zz		
	ph	le	dge	ve				s		
		al	ge					se		
								ze		
ch	sh	th	ng	nk	a	e	i	o	u	
tch	ch					ea	y	a	o-e	
ture	ti								ou	
	ssi									
	si									
	ci									

Grow the code grapheme mat Phase 2, 3 and 5

ai	ee	igh	oa	oo	yoo	oo	ar
ay	ea	ie	o	ue	ue	u	a
a	e	i	o-e	u-e	u	oul	al
a-e	e-e	i-e	ou	ew	u-e		
eigh	ie	y	oe	ou	ew		
aigh	y		ow	ui			
ey							
ea							
or	ur	ow	oi	ear	air	zh	
aw	er	ou	oy	ere	are	su	
au	ir			eer	ere	si	
aur	or				ear		
oor							
al							
a							
oar							
ore							

Tricky words

is I the put pull full as
and has his her go no to
into she push he of we me be

Tricky words

was you they my by all
are sure pure

How you can help at home

Ask children to spot the digraphs in a word.. Practice tricky words.

Practice blending words, writing simple sentences and encourage sharing their reading book daily.

Read with them, let them see you reading.

Christian Authenticity



In Collective Worship...



In our Values assembly on Mondays, we will be learning about psalm 1:3 and think about how our values are reflected in this and what this means for us as Christians. We always start by welcoming God, then we listen and respond before singing and having a reflection.

On Tuesday we have a assembly with our Chaplain, Owen, in our Chapel. He uses a resource called Jack in the Box which they love.

On Wednesday, we have a Class Worship - following the same pattern linking a bible story to the book/story from Monday's assembly.

Thursday is a Singing Assembly, learning and worshipping through song, as well as learning songs for events and performances.

Our Friday, Celebration Assembly celebrates the learning both inside and outside of school. It's a time for recognition and celebration of our brilliant Kingfishers.



We are maintaining our relationships with the community at the Child of Hope school in Uganda.

Each class will write letters to the children in their matching age class. We are sending them a book of our class author, lots of reading books and our class photo.

We are looking forward to receiving letters back from our class friends in Uganda.

Later on in the Year, we will have a day of activities to grow our links further.





Our Kingfisher team

There are lots of people who are part of our extended Kingfisher family. You and your children may see them around the campus.

Senior Leadership Team



Ms. Bishop (Headteacher and Designated Safeguarding Lead)



Miss Telling (Deputy Headteacher and Deputy Designated Safeguarding Lead)



Miss Baddeley (Overall Curriculum Leader, KS2 Lead & Deputy Designated Safeguarding Lead)



Mrs Bishop (Campus Co-ordinator)

Our EYFS Teaching Team



Miss Watts (Nursery Leader)



Miss Bowron (Reception Teacher)

Our Key Stage 1 Teaching Team



Mrs Connell (Year 1/2 teacher)



Mrs Dixon (Year 1/2 teacher (M/T/W))



Miss Telling (Year 1/2 teacher) Th/F



Miss Baddeley (Year 3/4 teacher)



Miss Small (Year 3/4 teacher)



Miss Coe (Higher Level Teaching Assistant)



Mrs B (Senior Teaching Assistant)

Miss Coe and Mrs B will work across the school covering classes.

Our Kingfisher team

Our Support Staff

We are lucky to be supported by a wonderful team across the school.

Our Teaching Assistants



Miss Sara



Mrs Brown



Sam Engley



Mrs Khan



Mrs Shim



Mary



Bianca



Bernie

Admin Team

Our Kingfisher Admin will be front of house to answer your questions and provide you with support:



Mrs Wright



Mrs Ryan



Mrs Strange

Our Chaplain



Owen leads a Collective Worship assembly each week. He also works with us across the school.

Reverend Owen Green

Safeguarding



Discovering and Learning Together, so all can Flourish.
'A tree planted by streams of water, which yields its fruit in season'(Psalm1:3)
Wisdom –Hope –Service–Resilience



Safeguarding and Child Protection Worried about a Child?

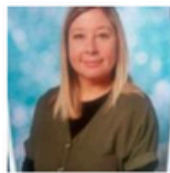
If you have a concern about the safety or well-being of a child, please speak to one of our safeguarding team. In this school this is:-



Sharon Bishop
Designated
Safeguarding Lead



Sally Telling
Deputy Designated
Safeguarding Lead



Jodie Lane
Deputy Designated
Safeguarding Lead



Natalie O'Donnell
Deputy Designated
Safeguarding Lead



Hannah Baddeley
Deputy Designated
& Online safety
Safeguarding Lead



Please contact 'Children and Families Contact Swindon' if you are concerned about a child.

E-mail: Childrenandfamiliescontact@swindon.gov.uk

Telephone: 01793 464646

8.30am to 4.40pm Monday to Thursday 8.30am to 4.00pm Friday

The Emergency Duty Service (EDS) is available outside office hours on

01793 436699

If you think that a child is in immediate danger, please ring 999 and speak to the police.

