



Nursery Newsletter Term 1

Welcome message

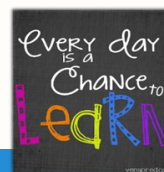
We hope you and your child have enjoyed a restful summer and have recharged the batteries. The first few days of the year at Kingfisher are all about settling in, renewing and forming friendships and getting to know routines and expectations. This newsletter will give you some key information about the term ahead.

We will be talking about ourselves, learning about each other and then celebrating our similarities and differences. We will discover that we are part of our family, our new classes and our school community. We are learning collaboratively within both our class and our outdoor area to maximise our learning opportunities.

We look forward to getting to know you all better. If you have any questions regarding the information in this newsletter, or other more general queries, please don't hesitate to talk to us.

Thank you,

The Nursery Team



Don't forget to follow us on...



@KingfisherCE



Kingfisherceacademy

"Discovering and Learning Together, so all can Flourish".

'A tree planted by streams of water, which yields its fruit in season' (Psalm 1:3)

Wisdom – Hope – Service – Resilience



Kingfisher
CE ACADEMY

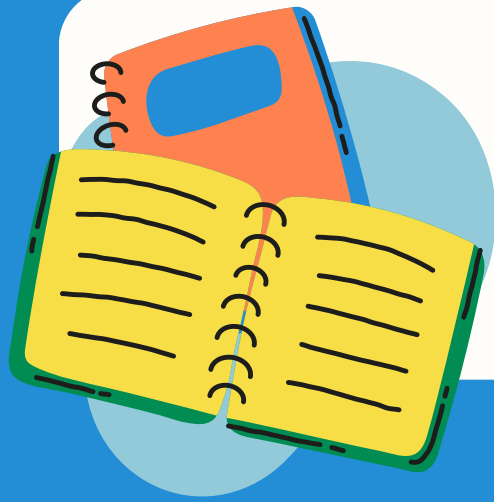
Wichelstowe Trinity
Learning Campus

LIFE IN ALL ITS FULLNESS

Term dates

- **Wednesday 3rd September** - First day of term I.
- **Tuesday 9th September** Visitor in from Child of Hope School
- **Meet the Teacher** - 3.30 in classrooms.
- **Tuesday 16th September** - Phonics and Reading Workshop 9.00 in hall
- **Monday 22nd September** - Individual school photos. There will be an opportunity for sibling photos. Details to follow.
- **Tuesday 23rd September** - Harvest Service 2.30 pm. (School)
- **Friday 26th September** MacMillan Coffee morning for parents.
- **Give and Learn Day** - Child of Hope project.
- **Tuesday 7th October** Athlete Visit and workshops.
- **Thursday 23rd October** End of term assembly with parents 2.15pm (School)
- **Thursday 23rd October** - End of term I 3.00 pm finish.
- **Friday 24th October** - Inset day (school closed to children)





Beginning and end of the school day.

Please remember Nursery begins at 8.30am, This is when children begin their learning. Please be on time. The Nursery door will then be shut and the playground gate locked at 8.40 am. This is to safeguard all our children.

Pick up is at 3.00 pm from the Nursery door

If someone else is picking up, please inform the Nursery staff on the door in the morning or the school office during the day. If it is someone not known to us, you will be asked to set up a password so the Nursery staff on the door knows that this is the agreed pick up. We will not let children go with an unknown adult or with a know adult without prior knowledge of the arrangement. This is of course to safeguard our children.

We are a mobile free zone. We would appreciate all phones to be switched off or put away on the playground. Please greet your child with a smile and not your phone. We know from many years experience that asking how their day was or asking what they did today, is usually met with Ok, I don't know or similar. At the end of the day we have a Five to Flourish discussion when we ask them to think of things they are proud of, they have learned, something that links to our values of embracing hope, building resilience, developing wisdom and choosing service. This may help you have a more productive conversation.



Don't forget to follow us on...



@KingfisherCE



Kingfisherceanacademy

"Discovering and Learning Together, so all can Flourish".

'A tree planted by streams of water, which yields its fruit in season' (Psalm 1:3)

Wisdom – Hope – Service – Resilience



Kingfisher
CE ACADEMY



Wichelstowe Trinity
Learning Campus

LIFE IN ALL ITS FULLNESS

What you will need...

P.E.

Antony Class PE will be on a **Thursday**.

Please send your child to school with appropriate clothes to take part in PE. The school PE uniform is a white polo shirt, navy/black shorts or trousers and plain trainers or daps.

They will be in this all day, so please ensure it is weather appropriate.



Outdoor learning

We will often be outside in our lessons, please make sure that children always bring a coat so we can get outside. If they have a spare set of wellies that could be left in school, this would be useful. A coat with a hood is much better than an umbrella. We have some all in one suits for outside exploring however if you would like bring in your own that would be appreciated.



PLEASE LABEL EVERYTHING!

Meet the Team

Emma

Favourite colour: Pink
Favourite animal: dog
Favourite drink: Cola
Favourite activity: Music



Jodie

Favourite colour: Green
Favourite animal: Cat
Favourite drink: Tea
Favourite activity: Cooking



Sam

Favourite colour: Pink
Favourite animal: dog
Favourite drink: Tea
Favourite activity: Playdough



Esther

Favourite colour: Pink
Favourite animal: Coffee
Favourite drink: Cola
Favourite activity: Music

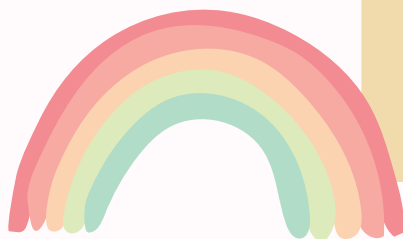


Our Class Author

All our classes at Kingfisher CE Academy are named after authors.

Our class is named after Steve Antony.

Since his 2014 debut, multi award-winning author-illustrator Steve Antony has so far written and illustrated 18 picture books and sold over one million copies worldwide, and 7 of his titles have been nominated for the Kate Greenaway Medal. He plays an active role in his local community as Patron to Swindon Libraries Children's Services and recently designed their library card. He is an Ambassador for The National Literacy Trust, an active supporter of Beanstalk and a vocal advocate for more incidental inclusiveness in children's literature, having written several articles on the subject.



Reading



We are committed as a school to ensuring all children develop the skills they need to read independently and have access to life long learning. Our team believe in ensuring all children find themselves represented in books. We aim to expose our children to high quality, award winning and diverse literature.

Lending Library

We have a lending library next to the nursery office where we share our books, discuss what we liked about them and recommend to each other. Each week your child will have to opportunity to choose a book to share at home. Bring the book back the following week to swap for a new one!



Books for the term

Rainbowsaurus
Ill Wait Mr Panda
Thank you Mr Panda
Amazing
The Queen's Hat
The Queen's Handbag



How you can help at home

Share books that your children bring home from school and read any you have at home. Read recipes, magazines, print in the environment. Let your children see you reading!

Christian Authenticity



In Collective Worship...



In our Values assembly on Mondays, we will be learning about psalm 1:3 and think about how our values are reflected in this and what this means for us as Christians. We always start by welcoming God, then we listen and respond before singing and having a reflection.

On Tuesday the school have a assembly with our Chaplain, Owen, in our Chapel. He uses a resource that has been especially written for KSI and is the next in the series from Jack in the Box which they loved in Reception

and Y1. Each assembly follows the familiar pattern: Welcome, Learn, Reflect, Respond and as Oscar the Owl 'flies' out of the box he invites children to become involved in each part of the worship journey.

On Wednesday we have a Class Worship - following the same pattern linking a bible story to the book/story from Monday's assembly.

Thursday is a Singing Assembly, learning and worshipping through song, as well as learning songs for events and performances.

Our Friday Celebration Assembly celebrates the learning both inside and outside of school. It's a time for recognition and celebration of our brilliant Kingfishers.



We are maintaining our relationships with the community at the Child of Hope school in Uganda.

Each class will write letters to the children in their matching age class. We are sending them a book of our class author, lots of reading books and our class photo.

We are looking forward to receiving letters back from our class friends in Uganda.

Later on in the Year we will have a day of activities to grow our links further.



Festivals

Later in the term we will be celebrating the festival of Harvest. We will be holding a whole school Harvest Festival Assembly. Please come along to support and celebrate with us!





Kingfisher
CE ACADEMY

Our Kingfisher team

There are lots of people who are part of our extended Kingfisher family. You and your children may see them around the campus.

Senior Leadership Team



Ms. Bishop (Headteacher and Designated Safeguarding Lead)



Miss Telling (Deputy Headteacher and Designated Safeguarding Lead)



Mrs Bishop (Campus Co-ordinator)

Our EYFS Teaching Team



Mrs Lane
(Nursery Manager)



Miss Watts
(Deputy Nursery Manager)



Miss Bowron
(Reception Teacher)

Our Key Stage 1 Teaching Team



Mrs Connell
(Year 1/2 teacher)



Mrs Dixon
Year 1/2 teacher
(M/T/W)



Miss Telling
(Year 1/2 teacher) Th/F



Miss Coe
(Higher Level Teaching Assistant)



Mrs B
(Senior Teaching Assistant)

Our Key Stage 2 Teaching Team



Miss Baddeley
(Year 3/4 teacher)



Miss Small
(Year 3/4 teacher)

Miss Coe and Mrs B will work across the school covering classes.

Our Kingfisher team

Our Support Staff

We are lucky to be supported by a wonderful team across the school.

Our Teaching Assistants



Jill Armour



Miss Sara



Mrs Brown



Sam Engley



Mrs Khan



Mrs Shim



Mary



Bianca



Bernie

Admin Team

Our Kingfisher Admin will be front of house to answer your questions and provide you with support:



Mrs Wright



Mrs Ryan



Mrs Strange

Our Chaplain



Owen leads a Collective Worship assembly each week. He also works with us across the school.

Reverend Owen Green

Safeguarding



Discovering and Learning Together, so all can Flourish.
'A tree planted by streams of water, which yields its fruit in season' (Psalm 1:3)
Wisdom – Hope – Service – Resilience



Safeguarding and Child Protection Worried about a Child?

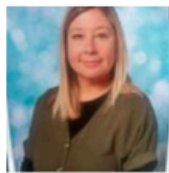
If you have a concern about the safety or well-being of a child, please speak to one of our safeguarding team. In this school this is:-



Sharon Bishop
Designated
Safeguarding Lead



Sally Telling
Deputy Designated
Safeguarding Lead



Jodie Lane
Deputy Designated
Safeguarding Lead



Natalie O'Donnell
Deputy Designated
Safeguarding Lead



Hannah Baddeley
Deputy Designated
& Online safety
Safeguarding Lead



Please contact 'Children and Families Contact Swindon' if you are concerned about a child.

E-mail: Childrenandfamiliescontact@swindon.gov.uk

Telephone: 01793 464646

8.30am to 4.40pm Monday to Thursday 8.30am to 4.00pm Friday

The Emergency Duty Service (EDS) is available outside office hours on

01793 436699

If you think that a child is in immediate danger, please ring 999 and speak to the police.

